

If the pattern has a double line around it, the seam allowances are included.

**Note:** By default, seam allowances are NOT included (single line) and will need to be added when laying out and cutting details.

Seam Allowance: 1 cm on all seams; hem guidelines are printed on pattern.

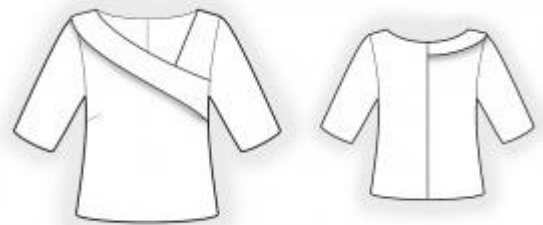
**Important!** Please print all the paper patterns and lay them out at the width of fabric you plan to use (usually from 90 to 150 cm) to see how much fabric you will need.

Don't forget to take into account pieces to be duplicated or cut on a fold. When sewing the garment, pay attention to notches. They must match up with corresponding pieces.

## 2513 Blouse with asymmetric collar

Recommendations on fabric: natural/mixed knit fabric of medium stretchiness.

You will also need: Knit fusible interfacing.



### CUTTING:

The word, "beam" used on some patterns means "straight of grain". Some pieces will be cut on the fold, this is noted on the pattern piece. Mark all notches and other design features such as darts, pleats etc. from the pattern onto your fabric.

Seam allowances: seam allowance for hem of garment and hem of sleeve – 2 cm, other seams - 1.0 cm.

### Main fabric:

1. Back – cut 2
2. Front – cut 1
3. Front yoke – cut 1
4. Sleeve – cut 2
5. Collar – cut 2

### Fusible interfacing:

1. Collar – cut 1

## INSTRUCTIONS:

Advice: sew knit pieces with special elastic/zig-zag stitches. If you use an overlock, cut seam allowances to 0.6-0.8 cm width. Topstitch hem allowances with double needle to save elasticity.

1. Sew darts on front. Press bulk towards top.
2. Sew shoulder seams. Serge seams and press towards back.
3. Left neckline: Cut or use ready-made bias tape, its width should equal 4 cm and length should equal the length of back neckline + the length of the yoke's neckline + 4 cm. Fold bias tape in half lengthwise right side out and press. Pin bias tape to neckline from the right side and sew, fold bias tape onto wrong side and topstitch onto main piece along the seam.
4. Pin together collars right sides together and sew along collar fall. Collar turn right side out and press.
5. Pin collar, right side down, onto the wrong side of the garment and sew, sewing the front yoke on the left side at the same time. Clip seam allowances, serge, fold away collar down and press. Slipstitch collar to the center back seam, to armhole and to side seam.
6. Sew center back seam. Serge, press towards left.
7. Sew side seams, press seams towards back and serge.
8. Sew sleeve seam, serge, and press. Sew sleeves into armholes, serge, and press.
9. Serge hem of garment and lower edge of sleeve, press onto wrong side and topstitch.

Congratulations, your blouse is ready! :)