

If the pattern has a double line around it, the seam allowances are included.

Note: By default, seam allowances are NOT included (single line) and will need to be added when laying out and cutting details.

Seam Allowance: 1 cm on all seams; hem guidelines are printed on pattern.

Important! Please print all the paper patterns and lay them out at the width of fabric you plan to use (usually from 90 to 150 cm) to see how much fabric you will need.

Don't forget to take into account pieces to be duplicated or cut on a fold. When sewing the garment, pay attention to notches. They must match up with corresponding pieces.

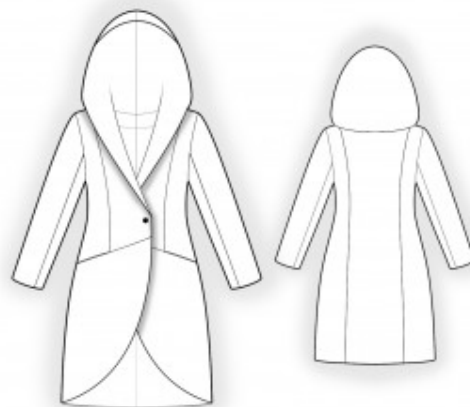
2523 Coat with Curved Front Edges and Hood

Recommendations on fabric: natural/mixed fabric suitable for coats.

You will also need: fusible interfacing; lining; thin shoulder pads.

CUTTING:

The word, "beam" used on some patterns means "straight of grain". Some pieces will be cut on the fold, this is noted on the pattern piece. Mark all notches and other design features such as darts, pleats etc. from the pattern onto your fabric.



Seam allowances: all seams 1 cm. Seam allowance for hem of garment and hem of sleeve – 3 cm.

Main fabric:

1. Center back – cut 2
2. Side back – cut 2
3. Side front – cut 2
4. Center front – cut 2
5. Center front facing – cut 2
6. Back neck facing – cut 1
7. Upper sleeve – cut 2

8. Lower sleeve – cut 2
9. Lower front – cut 2

Lining is cut using the pattern blocks for self fabric, except for the width of back neckline facing.

Lining:

1. Center back – cut 2
2. Side back – cut 2
3. Side front – cut 2
4. Front lining – cut 2
5. Upper sleeve – cut 2
6. Lower sleeve – cut 2
7. Lower front – cut 2
8. Pocket bag – cut 4

Fusible interfacing: center front, center front facing (except for the hood), back neck facing.

INSTRUCTIONS:

1. Apply fusible interfacing. Cut a strip of fusible interfacing and apply it along the back neckline edge.
2. Sew the princess seams on the back and press the seam allowances open. Sew the center back seam and press the seam allowances open.
3. Sew the princess seam on the front and press the seam allowances open. Sew the upper pocket lining to the upper front, starting and stopping exactly at the marked pocket opening lines. Press the seam allowances upward. Sew the lower pocket lining to the lower front, starting and stopping exactly at the marked seam line. Sew the lower front to the front from the center front to the pocket opening and from the pocket opening to the side seam. Press the seam allowances open. Sew the pocket bag and press the seam allowances.
4. Sew the hood seam and press the seam allowances open. Clip into the seam allowances at the shoulder corner. Sew the hood to the back neckline. Sew the shoulder seams of the coat and press the seam allowances open.
5. Sew the side seams of the coat and press the seam allowances open.
6. Sew the elbow seam of the sleeve and press the seam allowances open. Press the sleeve hem allowance. Sew the front sleeve seam and press the seam allowances open.
7. Set the sleeves into the armholes, matching the notches and easing the fullness along the upper sleeve cap. Sew in the shoulder pads.
8. Sew the shoulder seams of the back neckline facing and front facings, clipping into

the seam allowances at the corners. Press the seam allowances open. Sew the hood seam. Sew the dart on the front lining. Assemble the lining in the same way as the shell, leaving an opening in the left sleeve elbow seam for turning. Sew the lining to the facings.

9. Pin the lining to the coat, right sides together, matching the outer edges. Sew the lining to the center front edges and hood. Sew the lining to the coat hem and sleeve hems. Turn the coat right side out through the opening. Baste the lining to the shell along the front waist seam. Sew the opening closed.
10. Make a button loop and sew on the button.

Congratulations – your coat are finished! :)