

If the pattern has a double line around it, the seam allowances are included.

Note: By default, seam allowances are NOT included (single line) and will need to be added when laying out and cutting details.

Seam Allowance: 1 cm on all seams; hem guidelines are printed on pattern.

Important! Please print all the paper patterns and lay them out at the width of fabric you plan to use (usually from 90 to 150 cm) to see how much fabric you will need.

Don't forget to take into account pieces to be duplicated or cut on a fold. When sewing the garment, pay attention to notches. They must match up with corresponding pieces.

2528 Sleeveless Blouse with Shawl Collar

Recommendations on fabric: natural/mixed fabrics suitable for blouses.

You will also need: fusible interfacing.

CUTTING:

The word, "beam" used on some patterns means "straight of grain". Some pieces will be cut on the fold, this is noted on the pattern piece. Mark all notches and other design features such as darts, pleats etc. from the pattern onto your fabric.

Seam allowances: seam allowance for hem of garment – 1.5 cm, other seams – 1 cm.

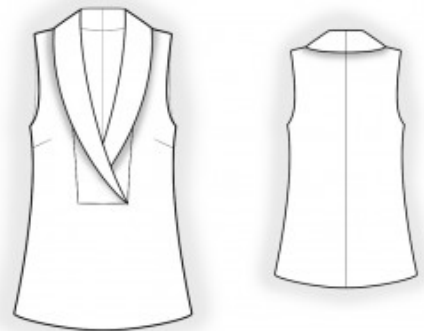
Main fabric:

1. Front – cut 1 on fold
2. Back – cut 2
3. Collar – cut 4

Fusible interfacing:

1. Collar – cut 2

INSTRUCTIONS:



1. Sew the center back seam. Serge the seam allowances and press them toward the left.
2. Sew the front darts and press the dart excess upward.
3. Sew the center seams of the collar pieces in pairs and press the seam allowances open. Pin the collar pieces together, right sides facing, and sew along the outer edge. Clip the seam allowances, turn the collar right side out, shape, and press. Place the right collar over the left collar and baste them together along the lower edge. Sew the collar into the front neckline, clipping into the corners where necessary. Serge the seam allowances and press.
4. Sew the shoulder seams, starting and stopping exactly at the marked collar seam lines. Press the seam allowances toward the back and serge. Sew the collar into the back neckline, clipping into the corners where necessary. Serge the seam allowances and press.
5. Cut or use ready-made bias tape 4 cm wide and long enough to match the armhole length plus 4 cm. Fold the bias tape in half lengthwise, right side out, and press. Pin the bias tape to the armhole edge from the right side and sew. Clip into the seam allowances. Fold the bias tape to the wrong side and topstitch along the seam from the right side. Press.
6. Sew the side seams. Press the seam allowances toward the back and serge.
7. Serge the lower edge of the garment, press it to the wrong side, and topstitch.

Congratulations – your blouse are finished! :)