

If the pattern has a double line around it, the seam allowances are included.

Note: By default, seam allowances are NOT included (single line) and will need to be added when laying out and cutting details.

Seam Allowance: 1 cm on all seams; hem guidelines are printed on pattern.

Important! Please print all the paper patterns and lay them out at the width of fabric you plan to use (usually from 90 to 150 cm) to see how much fabric you will need.

Don't forget to take into account pieces to be duplicated or cut on a fold. When sewing the garment, pay attention to notches. They must match up with corresponding pieces.

2530 Sleeveless Blouse with a Loose Front Overlay

Recommendations on fabric: natural/mixed fabrics suitable for dresses or blouses.

You will also need: fusible interfacing; 1 button; 1 decorative button.

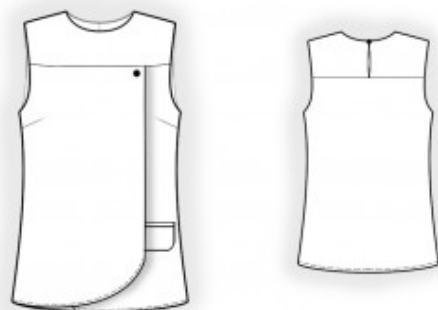
CUTTING:

The word, "beam" used on some patterns means "straight of grain". Some pieces will be cut on the fold, this is noted on the pattern piece. Mark all notches and other design features such as darts, pleats etc. from the pattern onto your fabric.

Seam allowances: all seams 1 cm; seam allowance along the outer edges of the left front and of the right front – 1.2 cm; seam allowance for hem of garment – 1.2 cm.

Main fabric:

1. Back yoke – cut 2
2. Back – cut 1 on fold
3. Front yoke – cut 1
4. Right front – cut 1
5. Left front – cut 1



6. Flap – cut 2
7. Pocket facing – cut 2
8. Pocket bag – cut 2

Fusible interfacing:

1. Flap – cut 1
2. Pocket facing – cut 2

INSTRUCTIONS:

1. Apply fusible interfacing.
2. Sew the darts on the front pieces and press the dart excess upward.
3. Serge the outer and lower edges of the left and right front overlays. Press the seam allowances to the wrong side and topstitch.
4. Pin the pocket flap pieces together, right sides facing, and sew the side and lower edges. Clip the seam allowances, turn the flap right side out, shape, and press.
5. Mark the pocket position. Fold the pocket facings in half lengthwise, wrong sides together, and press. Mark the stitching line on the pocket facing parallel to the folded edge. Mark an additional stitching line on the pocket flap parallel to its upper edge, ensuring an even flap width throughout. Mark additional lines parallel to the pocket opening for attaching the flap and facings. Sew the pocket lining to the pocket flap. Sew the facings to the front. End the stitching exactly at the marked pocket guidelines. Check the stitching from the wrong side to ensure the lines are parallel. Cut the pocket opening and clip diagonally toward the ends of the stitching, stopping 1–1.5 cm from each end. Turn the facings to the wrong side through the opening and shape the pocket. Align the folded edges of the facings so they meet neatly. Sew reinforcing stitches at the pocket corners. Insert the flap into the pocket opening and sew it to the upper pocket facing. Sew the lower pocket lining into the seam of the lower facing. Trim the pocket lining, sew it together, and serge the edges.
6. Fold the outer edge of the right front to the wrong side at the marked point. Place the right front over the left front and baste together along the upper edges. Sew the yoke to the front. Press the seam allowances upward and serge.
7. Serge the center edges of the back yokes, press them to the wrong side, and topstitch. Sew the back yokes to the back. Press the seam allowances upward and serge.
8. Sew the shoulder seams. Press the seam allowances toward the back and serge.
9. Cut (or use ready-made) bias tape 2.5 cm wide and 10 cm long for the button loop. Fold the tape in half lengthwise, right sides together, and stitch 0.3 cm from the fold. Trim the seam allowances close to the stitching, turn the tube right side out, and shape it. Adjust the loop length.

10. Cut (or use ready-made) bias tape 4 cm wide and long enough to match the neckline length plus 4 cm. Fold the bias tape in half lengthwise, right side out, and press. Pin the bias tape to the neckline from the right side, leaving the ends free, and sew. Fold the bias tape to the wrong side, clip into the seam allowances where necessary, and topstitch along the seam from the right side. Press. Sew the button loop to the left back yoke.
11. Cut (or use ready-made) bias tape 4 cm wide and long enough to match the armhole length plus 4 cm. Fold the bias tape in half lengthwise, right side out, and press. Pin the bias tape to the armhole edge from the right side, leaving the ends free, and sew. Fold the bias tape to the wrong side, clip into the seam allowances where necessary, and topstitch along the seam from the right side. Press.
12. Sew the side seams (the back extends below the front by the depth of the hem allowance). Press the seam allowances toward the back and serge.
13. Serge the hem allowance of the back, press it to the wrong side, and topstitch.
14. Sew a button onto the right back yoke. Sew a button onto the right front.

Congratulations – your blouse are finished! :)