

If the pattern has a double line around it, the seam allowances are included.

**Note:** By default, seam allowances are NOT included (single line) and will need to be added when laying out and cutting details.

Seam Allowance: 1 cm on all seams; hem guidelines are printed on pattern.

**Important!** Please print all the paper patterns and lay them out at the width of fabric you plan to use (usually from 90 to 150 cm) to see how much fabric you will need.

Don't forget to take into account pieces to be duplicated or cut on a fold. When sewing the garment, pay attention to notches. They must match up with corresponding pieces.

## 2547 Blouse with slit-neck and cuffs

Recommendations on fabric: natural/mixed fabrics suitable for blouses.

You will also need: fusible interfacing.

### CUTTING:

The word, "beam" used on some patterns means "straight of grain". Some pieces will be cut on the fold, this is noted on the pattern piece. Mark all notches and other design features such as darts, pleats etc. from the pattern onto your fabric.

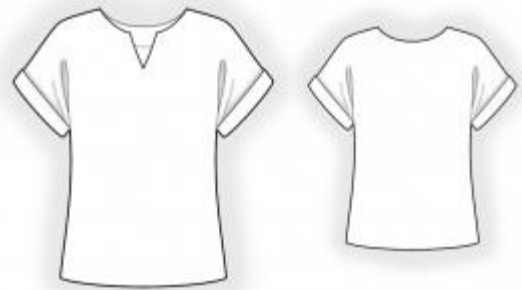
Seam allowances: all seams 1 cm. Seam allowance for hem of garment – 1.5 cm.

### Main fabric:

1. Back – cut 1 on fold
2. Front – cut 1 on fold
3. Front neck facing – cut 1
4. Back neck facing – cut 1

### Fusible interfacing:

1. Front neck facing – cut 1
2. Back neck facing – cut 1



## INSTRUCTIONS:

1. Apply fusible interfacing.
2. Sew shoulder and side seams, press seams towards back and serge.
3. Sew the shoulder seams of the neckline facings. Press seam apart. Serge outer edge. Pin facing onto garment right side down and sew neckline, clipping into corner. Clip seam allowances, fold facing onto wrong side and press.
4. Serge lower edge of sleeve. Fold the cuff onto wrong side and press and press the fold. Sew cuff to sleeve. Fold cuff to right side and press. Sew the cuff to the side seam and to the shoulder seam by hand.
5. Serge lower edge of garment, press onto wrong side and topstitch.

Congratulations, your blouse is ready! :)