

If the pattern has a double line around it, the seam allowances are included.

**Note:** By default, seam allowances are NOT included (single line) and will need to be added when laying out and cutting details.

Seam Allowance: 1 cm on all seams; hem guidelines are printed on pattern.

**Important!** Please print all the paper patterns and lay them out at the width of fabric you plan to use (usually from 90 to 150 cm) to see how much fabric you will need.

Don't forget to take into account pieces to be duplicated or cut on a fold. When sewing the garment, pay attention to notches. They must match up with corresponding pieces.

## 2557 Sleeveless blouse with peplum

Recommendations on fabric: natural/mixed fabrics suitable for blouses.

You will also need: lining, dress zipper, fusible interfacing.

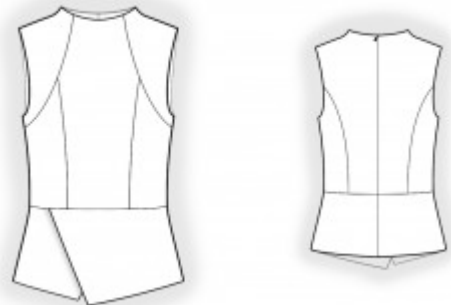
### CUTTING:

The word, "beam" used on some patterns means "straight of grain". Some pieces will be cut on the fold, this is noted on the pattern piece. Mark all notches and other design features such as darts, pleats etc. from the pattern onto your fabric.

Seam allowances: all seams 1 cm, seam allowance along the hem and along the central edges of peplum – 1.5 cm.

### Main fabric:

1. Upper center back - cut 2
2. Upper side back - cut 2
3. Back peplum - cut 2
4. Front yoke – cut 2
5. Upper center front - cut 1
6. Upper side front - cut 2
7. Front peplum right – cut 1
8. Front peplum left – cut 1



Lining:

1. Upper center back - cut 2
2. Upper side back - cut 2
5. Upper center front - cut 1
6. Upper side front - cut 2

INSTRUCTIONS:

1. Apply fusible interfacing to the neckline edges on back piece and on front piece, and to the slanted edges of the front peplums.
2. Sew princess seams on upper back, press towards center.
3. Sew princess seams on upper front, press towards center. Sew yoke to front. Clip seam allowances and press onto yoke.
4. Sew side seams and shoulder seams on upper part, clip seam allowances and press apart.
5. Sew seams on lining. Pin lining to garment right sides together and sew the neckline. Clip into curves, turn the piece right side out, straighten, press. Sew lining to armhole in two steps: first sew the front armhole, then sew the back armhole. Clip seam allowances, turn right side out and press. Baste lining to the main fabric along the lower edges and along the central back edges.
6. Sew side seams of peplums. Serge seams and press towards back. Serge the lower edges and the central edges of the front peplums, turn inside, and topstitch. Pin the left peplum onto the right peplum, baste together the upper edges.
7. Sew upper part to lower part, press towards top and serge.
8. Serge center back edges separately on each piece. Sew center back seam from the mark to the bottom edge, press the seam apart. Sew in zipper.

Congratulations, your blouse is ready! :)