

If the pattern has a double line around it, the seam allowances are included.

**Note:** By default, seam allowances are NOT included (single line) and will need to be added when laying out and cutting details.

Seam Allowance: 1 cm on all seams; hem guidelines are printed on pattern.

**Important!** Please print all the paper patterns and lay them out at the width of fabric you plan to use (usually from 90 to 150 cm) to see how much fabric you will need.

Don't forget to take into account pieces to be duplicated or cut on a fold. When sewing the garment, pay attention to notches. They must match up with corresponding pieces.

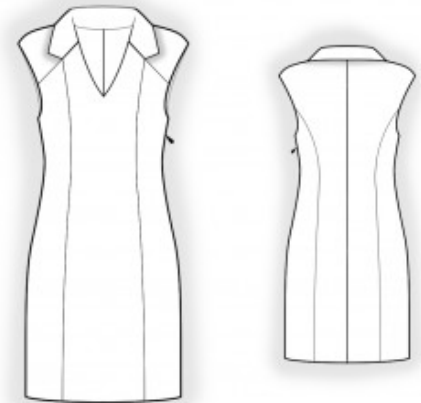
## 2585 Dress with V-Neck and Collar

Recommendations on fabric: natural/mixed fabric suitable for dresses.

You will also need: fusible interfacing, dress zipper.

### CUTTING:

The word, "beam" used on some patterns means "straight of grain". Some pieces will be cut on the fold, this is noted on the pattern piece. Mark all notches and other design features such as darts, pleats etc. from the pattern onto your fabric.



Seam allowances: all seams 1 cm; seam allowance for hem of garment – 2 cm.

### Main fabric:

1. Center back – cut 2
2. Side back – cut 2
3. Side front – cut 2
4. Center front – cut 1 on fold
5. Yoke – cut 2
6. Collar – cut 2
7. Front neck facing – cut 1

Fusible interfacing:

1. Front neck facing – cut 1
2. Collar – cut 1

INSTRUCTIONS:

1. Apply fusible interfacing.
2. Sew the center back seam. Serge the seam allowances and press them toward the left.
3. Sew the side back pieces to the center back. Serge the seam allowances and press them toward the center.
4. Sew the yoke to the back along the shoulder edge. Serge the seam allowances and press them toward the back.
5. Pin the collar pieces together, right sides facing, and sew the corners and outer edge. Leave the slit in the collar unsewn. Trim the corners, turn the collar right side out, and press.
6. Sew the outer collar to the neckline. Fold the seam allowance of the inner collar to the inside and stitch in the ditch. Pin the collar to the yoke along the slit line on the collar.
7. Sew the side front pieces to the front. Serge the seam allowances and press them toward the center.
8. Serge the outer edge of the front neckline facing. Pin the center front facing to the front and sew the neckline. Clip the seam allowances, turn the facing to the wrong side, and press. Sew the front yoke to the front, wrapping the facing over the seam allowances. Serge the seam allowances and press them toward the front.
9. Cut or use ready-made bias tape 4 cm wide and long enough to match the armhole length plus 4 cm. Fold the bias tape in half lengthwise, right side out, and press. Pin the bias tape to the armhole edge from the right side and sew. Fold the bias tape to the wrong side and topstitch along the fold.
10. Sew the right side seam. Serge the seam allowances and press them toward the back. Serge the left side edges separately. Sew from the armhole to the zipper notch and from the zipper notch to the hem. Press the seam allowances open, pressing the zipper opening at the same time. Insert the zipper.
11. Serge the lower edge of the garment, press it to the wrong side, and topstitch.

Congratulations – your dress are finished! :)