

If the pattern has a double line around it, the seam allowances are included.

Note: By default, seam allowances are NOT included (single line) and will need to be added when laying out and cutting details.

Seam Allowance: 1 cm on all seams; hem guidelines are printed on pattern.

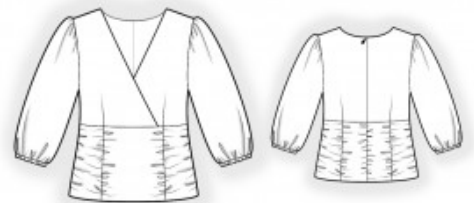
Important! Please print all the paper patterns and lay them out at the width of fabric you plan to use (usually from 90 to 150 cm) to see how much fabric you will need.

Don't forget to take into account pieces to be duplicated or cut on a fold. When sewing the garment, pay attention to notches. They must match up with corresponding pieces.

2613 Blouse with Vertical Gathers at the Waist

Recommendations on fabric: natural/mixed fabrics with elastane suitable for blouses. Or natural/mixed knit fabrics with high stretchiness.

You will also need: dress zipper; elastic tape, its width should equal 1.5–2 cm; elastic thread.



CUTTING:

The word, “beam” used on some patterns means “straight of grain”. Some pieces will be cut on the fold, this is noted on the pattern piece. Mark all notches and other design features such as darts, pleats etc. from the pattern onto your fabric.

Seam allowances: all seams 1 cm; seam allowance for hem of garment – 2.5 cm, hem of sleeve – 3 cm.

Main fabric:

1. Upper back – cut 2
2. Lower back – cut 2
3. Upper front – cut 2
4. Lower front – cut 1 on fold
5. Sleeve – cut 2

INSTRUCTIONS:

Advice: sew knit pieces with special elastic/zig-zag stitches. If you use an overlock, cut seam allowances to 0.6-0.8 cm width. Topstitch hem allowances with double needle to save elasticity.

1. Sew the darts on the back and press the dart excess toward the center. Sew the upper front to the lower front. Serge the seam allowances and press them upward. Serge the center back edges separately. Sew a gathering stitch along the center edges of the lower back pieces and gather the fullness. Sew the center back seam from the zipper notch to the hem. Insert the zipper. Serge the seam allowances and press them toward the left.
2. Sew the darts on the front and press the dart excess toward the center. Sew the shoulder seams, press the seam allowances toward the back, and serge. Serge the neckline edges on the front and back. Fold the seam allowance to the wrong side and topstitch. The neckline may also be finished with bias tape or a baby hem; in this case, trim away the seam allowance before finishing.
3. Place the right upper front over the left upper front and baste together along the center line. Sew the upper front to the lower front. Serge the seam allowances and press them upward.
4. Sew the sleeve seams. Serge the seam allowances and press. Sew a gathering stitch along the sleeve cap and gather the fullness. Set the sleeves into the armholes, serge the seam allowances, and press.
5. Serge the lower edge of the sleeve, press it to the wrong side by 1 cm, then by 2 cm, and topstitch to form a casing. Thread the elastic tape through the casing, adjust the length, and secure the ends.
6. Sew stitch lines with elastic thread along the marked lines on the front and back. Secure the thread ends to form gathers. Sew similar stitch lines along the side seams and center back seam.
7. Serge the hem of the garment, press it to the wrong side, and topstitch.

Congratulations – your blouse are finished! :)