

If the pattern has a double line around it, the seam allowances are included.

Note: By default, seam allowances are NOT included (single line) and will need to be added when laying out and cutting details.

Seam Allowance: 1 cm on all seams; hem guidelines are printed on pattern.

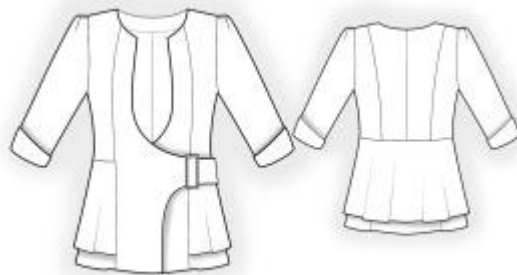
Important! Please print all the paper patterns and lay them out at the width of fabric you plan to use (usually from 90 to 150 cm) to see how much fabric you will need.

Don't forget to take into account pieces to be duplicated or cut on a fold. When sewing the garment, pay attention to notches. They must match up with corresponding pieces.

2646 Jacket with figure-cut front edge

Recommendations on fabric: natural/mixed suiting fabrics.

You will also need: fusible interfacing, shoulder pads, decorative buckle, 1 hidden button.



CUTTING:

The word, “beam” used on some patterns means “straight of grain”. Some pieces will be cut on the fold, this is noted on the pattern piece. Mark all notches and other design features such as darts, pleats etc. from the pattern onto your fabric.

Seam allowances: all seams 1 cm. Seam allowance for hem of garment – 1.2 cm.

Main fabric:

1. Center back – cut 2
2. Side back – cut 2
3. Lower back 1 – cut 1 on fold
4. Lower back 2 – cut 1 on fold
5. Side front – cut 2
6. Center front right – cut 2
7. Center front left – cut 2
8. Lower front 1 – cut 2
9. Lower front 2 – cut 2
10. Back neck facing – cut 1
11. Upper sleeve – cut 2

12. Lower sleeve – cut 2
13. Cuff – cut 2
14. Strap – cut 1

Fusible interfacing:

1. Center front right – cut 2
2. Center front left – cut 2
3. Back neck facing – cut 1
4. Cuff – cut 2
5. Strap – cut 1

INSTRUCTIONS:

1. Apply fusible interfacing.
2. Sew side backs to center back, press towards center, serge. Sew the center back seam, press towards left, serge.
3. Sew side seams on the upper part of garment, press seam allowances towards back, serge. Sew side edges on lower part of the main piece, press seam allowances towards back, serge.
4. Serge the lower edges of the fronts and of the backs, press onto wrong side and topstitch. Pin lower part 1 at lower part 2 and baste together along edges.
5. Sew upper part to lower part, press seam allowances towards top and serge.
6. Sew side fronts to front, press towards center, serge.
7. Sew shoulder seams, press towards the back, serge.
8. Serge the outer edges of the back neckline facing and of the inner center fronts (further referred to as – center front facings). Sew the back neckline facing to central front facings, press the seam apart. Pin center front facings onto garment right sides together and sew center front facings, neckline edge and the lower corner of the front piece. Clip into curves, trim away corners, turn pieces right side out. Topstitch the central front facings into the princess seam of the front.
9. Slash the sleeve in the upper part, along the upper edge of the sleeve cap, leaving seam allowance of 0.5 cm on each side. Sew the shoulder seam area on the sleeve. Press the seam apart, serge. Sew the upper part of the sleeve cap to sleeve, gradually coming to naught ,

serge. Sew the elbow seam and the front seam on the sleeve, serge, and press. Sew sleeves into armholes, press seam, serge. Sew shoulder pads.

10. Sew cuffs into ring pairwise, press the seam apart. Pin together cuffs right sides together and sew the shaped edge. Clip seam allowances, turn cuff right side out, straighten, press. Pin the cuff to the sleeve from the wrong side and sew, press seam, serge. Fold the cuff onto the sleeve.

11. Pin together strap in half lengthwise right sides together and sew the longer edge and the shorter edge. Turn right side out strap onto right side, straighten, press. Serge shorter edge. Thread strap into buckle, sew. Pin the shorter serged edge of the strap onto left side seam (the buckle is directed towards back) and topstitch. Fold strap onto front and sew a fixing stitch along the side seam.

12. Make the inner buttonhole on left front. Sew the inner button accordingly.

Congratulations, your jacket is ready! :)