

If the pattern has a double line around it, the seam allowances are included.

Note: By default, seam allowances are NOT included (single line) and will need to be added when laying out and cutting details.

Seam Allowance: 1 cm on all seams; hem guidelines are printed on pattern.

Important! Please print all the paper patterns and lay them out at the width of fabric you plan to use (usually from 90 to 150 cm) to see how much fabric you will need.

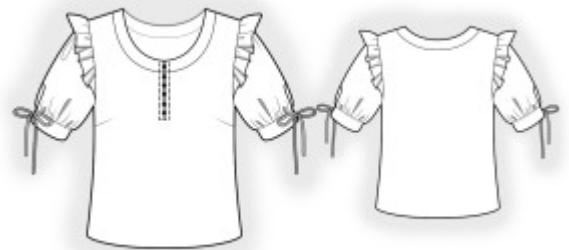
Don't forget to take into account pieces to be duplicated or cut on a fold. When sewing the garment, pay attention to notches. They must match up with corresponding pieces.

2734 Blouse with ruffles on shoulders

Recommendations on fabric: thin natural/mixed fabrics suitable for blouses approx. 0.8 m (size 32-44), approx. 1 m (size 46-54) with a fabric width of 150 cm.

Chiffon for sleeves approx. 0.4 m (size 32-54) with a fabric width of 150 cm.

You will also need: fusible interfacing, 6 buttons.



CUTTING:

The word, “beam” used on some patterns means “straight of grain”. Some pieces will be cut on the fold, this is noted on the pattern piece. Mark all notches and other design features such as darts, pleats etc. from the pattern onto your fabric.

Seam allowances: all seams 1 cm. Seam allowance along the lower edge of the garment – 2.5 cm.

Main fabric:

Main fabric:

1. Back - cut 1 on fold
2. Front – cut 1 on fold
3. Back neck facing – cut 2
4. Front neck facing – cut 2
5. Placket – cut 1

6. Cuff – cut 2
7. Cap Of Sleeve – cut 4

Chiffon:

1. Sleeve – cut 2

Fusible interfacing:

1. Back neck facing – cut 1
2. Front neck facing – cut 1
3. Placket – cut 1
4. Cuff – cut 2

INSTRUCTIONS:

1. Apply fusible interfacing.
2. Sew front darts and press the bulk towards the top.
3. Pin the back neckline facings together, right sides together, and sew the neckline opening. Clip the seam allowances, turn the facing right side out, straighten, and press. Sew the outer facing into the back neckline and press the seam allowances towards the facing. Fold under the seam allowance of the inner facing and stitch in the ditch along the seam of the outer facing.
4. Pin the front neckline facings together, right sides together, and sew the neckline opening. Clip the seam allowances, turn the facing right side out, straighten, and press. Sew the outer facing into the front neckline and press the seam allowances towards the facing. Fold under the seam allowance of the inner facing and stitch in the ditch along the seam of the outer facing.
5. Cut (or use ready-made) bias tape, with a width of 2.5 cm and a length of 30 cm for loop buttonholes. Fold the tape in half lengthwise, right sides together, and stitch at 0.3 cm from the fold. Cut away the seam allowances close to the seam, turn the tape right side out, and straighten the rolled piece. Cut it into 6 pieces, adjusting the length of the loop. Topstitch the button loops onto the front, placing the 'legs' edges onto the marked line of the slit.
6. Pin the placket onto the right side of the front and sew at 0.5 cm from the slit, coming close to the slit edge at the bottom. Slash the front and the facing along the marked line, fold the facing to the wrong side, fold inside the open edges, and topstitch onto the front.
7. Sew the side and shoulder seams, press towards the back, and serge.

8. Pin the cap sleeves together in pairs, right sides together, and sew the outer edge. Clip the seam allowances, turn the cap sleeve right side out, straighten, and press. Sew a gathering stitch along the inner edge and gather the fullness. Sew the cap sleeve to the armhole.
9. Cut a slit on the sleeve along the marked line. Cut bias tape from the main fabric (or use ready-made), with a width of 4 cm and a length equal to two lengths of the slit plus 4 cm. Fold the bias tape in half lengthwise and press. Press the outer seam allowances towards the center. Sew the bias tape to the slit of the sleeve (pin the bias tape to the slit edge from the right side and sew, then fold the bias tape to the wrong side and topstitch onto the garment along the fold line).
10. Sew the sleeve seam, press towards the back, and serge. Sew a gathering stitch along the upper edge of the sleeve and along the lower edge of the sleeve, and gather the fullness. Sew the sleeves into the armholes, serge, and press.
11. Cut 4 bias tapes, with a width of 2.5 cm and a length of 30 cm, for the sleeve ties. Fold the tape in half lengthwise, right sides together, and stitch at 0.3 cm from the fold. Cut away the seam allowances close to the seam, turn the tape right side out, and straighten the rolled piece.
12. Fold the cuff in half lengthwise, right sides together, and sew the short sides of the cuffs, inserting the ties. Start and stop stitching exactly at the marked line of the seam of the cuff. Trim the seam allowances, turn the cuff right side out, and press. Sew the outer part of the cuff to the sleeve, fold the inner side of the cuff inside, and topstitch into the seam of the outer cuff.
13. Fold under the lower edge at 1 cm and press, then at 1.5 cm and topstitch.
14. Sew on buttons on the left side of the slit on the front.

Congratulations, your blouse is ready! :)