

If the pattern has a double line around it, the seam allowances are included.

Note: By default, seam allowances are NOT included (single line) and will need to be added when laying out and cutting details.

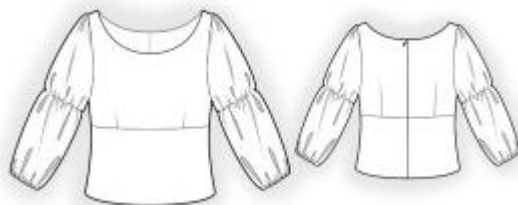
Seam Allowance: 1 cm on all seams; hem guidelines are printed on pattern.

Important! Please print all the paper patterns and lay them out at the width of fabric you plan to use (usually from 90 to 150 cm) to see how much fabric you will need.

Don't forget to take into account pieces to be duplicated or cut on a fold. When sewing the garment, pay attention to notches. They must match up with corresponding pieces.

2738 Blouse with ruffled sleeves

Recommendations on fabric: natural/mixed fabrics suitable for blouses approx. 1.5 m (size 32-42), approx. 1.8 m (size 44-54) with a fabric width of 150 cm.



You will also need: fusible interfacing, dress zipper, elastic tape, its width should equal 1 cm.

CUTTING:

The word, “beam” used on some patterns means “straight of grain”. Some pieces will be cut on the fold, this is noted on the pattern piece. Mark all notches and other design features such as darts, pleats etc. from the pattern onto your fabric.

Seam allowances: Seam allowance for hem of garment and hem of sleeve – 2.0 cm; other seams – 1 cm.

Main fabric:

1. Upper back - cut 2
2. Lower back - cut 2
3. Upper front - cut 1 on fold
4. Lower front - cut 1 on fold
5. Sleeve – cut 2
6. Back neck facing – cut 2
7. Front neck facing – cut 1

Fusible interfacing:

1. Back neck facing – cut 2
2. Front neck facing – cut 1

INSTRUCTIONS:

1. Apply fusible interfacing.
2. Sew darts on the upper backs and upper fronts, pressing the bulk towards the center.
3. Sew the upper back to the lower back, press towards the top, and serge. Sew the upper front to the lower front, press towards the top, and serge.
4. Serge the center back edges separately. Sew the center back seam from the zipper mark to the hem and press the seam apart. Sew in the zipper.
5. Sew the shoulder and side seams, press towards the back, and serge.
6. Sew the shoulder seam on the front neckline facing and the back neckline facing, pressing the seam apart. Serge the outer edge. Pin the facing onto the right side of the garment and sew the neckline. Clip the seam allowances, fold the facings onto the wrong side, and press. Sew the facing by hand to the shoulder seams and to the zipper tape.
7. Cut elastic tape; its length should equal the upper arm girth + 8 cm. Topstitch the elastic tape onto the sleeve from the wrong side with a double stitch line.
8. Sew the sleeve seam, press towards the back, and serge. Sew a gathering stitch along the sleeve cap and gather the fullness. Sew the sleeves into the armholes, serge, and press.
9. Serge the lower edge of the sleeve. Fold the seam allowance inside and topstitch, making a casing. Thread the elastic tape into the casing, adjust the length, and sew the ends together.
10. Serge the lower edge of the garment, press onto the wrong side, and topstitch.

Congratulations, your blouse is ready! :)