

If the pattern has a double line around it, the seam allowances are included.

Note: By default, seam allowances are NOT included (single line) and will need to be added when laying out and cutting details.

Seam Allowance: 1 cm on all seams; hem guidelines are printed on pattern.

Important! Please print all the paper patterns and lay them out at the width of fabric you plan to use (usually from 90 to 150 cm) to see how much fabric you will need.

Don't forget to take into account pieces to be duplicated or cut on a fold. When sewing the garment, pay attention to notches. They must match up with corresponding pieces.

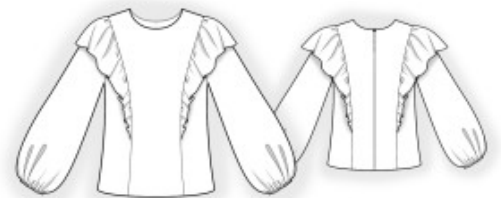
2773 Blouse with Ruffles in Princess Seams

Recommendations on fabric: well draping natural/mixed fabrics suitable for blouses.

You will also need: fusible interfacing; 1 button; elastic tape, its width should equal 1 cm.

CUTTING:

The word, "beam" used on some patterns means "straight of grain". Some pieces will be cut on the fold, this is noted on the pattern piece. Mark all notches and other design features such as darts, pleats etc. from the pattern onto your fabric.



Seam allowances: seam allowance for hem of garment and hem of sleeve – 1.5 cm; other seams – 1 cm.

Main fabric:

1. Center back – cut 2
2. Side back – cut 2
3. Center front – cut 1
4. Side front – cut 2
5. Flounce – cut 2
6. Sleeve – cut 2
7. Back neck facing – cut 2
8. Front neck facing – cut 1

Fusible interfacing:

1. Back neck facing – cut 2
2. Front neck facing – cut 1

INSTRUCTIONS:

1. Apply fusible interfacing.
2. Serge center back edges separately. Sew center back seam from the marking for slit down to the lower edge. Press the seam apart. Press slit.
3. Sew the shoulder edges of the center back and the center front. Serge seams and press towards back.
4. Sew shoulder seam of the side pieces. Serge and press towards back.
5. Serge lower edge of flounce, fold inside and topstitch. You may also finish the edges with bias tape or a narrow rolled hem; in this case, trim away the seam allowance. Sew a gathering stitch along the upper edge of the flounce and gather fullness.
6. Sew the princess seams on front and back continuously, inserting the seam allowance of the flounce. Serge seam and press towards center.
7. Sew side seams, press towards the back and serge.
8. Sew shoulder seam on front neckline facing and back neckline facing, press the seam apart. Serge the outer edge. Pin the facings onto the garment, right sides together, and sew the neckline. Clip seam allowances, fold facings onto wrong side and press the seams. Baste facing to garment along shoulder seams.
9. Cut (or take ready) bias tape, its width should equal 2.5 cm and its length should equal 10 cm for loop buttonhole. Fold tape in half lengthwise, right sides together, and stitch at 0.3 cm from fold. Cut away seam allowances close to seam, turn tape right side out and straighten the rolled piece. Adjust the length of the loop. Insert the button loop between the back and the facing, secure by hand.
10. Sew sleeve seam. Serge the seam allowances and press towards back. Serge seam allowance for hem of sleeve, fold inside onto wrong side and topstitch, making a casing. Thread the elastic tape into the casing, adjust length and sew ends together.
11. Sew sleeves into armholes, serge and press.
12. Serge the lower edge of garment, turn inside and topstitch.
13. Sew on a button.
Congratulations – your blouse are finished! :)