

If the pattern has a double line around it, the seam allowances are included.

Note: By default, seam allowances are NOT included (single line) and will need to be added when laying out and cutting details.

Seam Allowance: 1 cm on all seams; hem guidelines are printed on pattern.

Important! Please print all the paper patterns and lay them out at the width of fabric you plan to use (usually from 90 to 150 cm) to see how much fabric you will need.

Don't forget to take into account pieces to be duplicated or cut on a fold. When sewing the garment, pay attention to notches. They must match up with corresponding pieces.

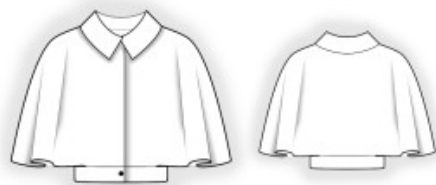
2810 Cape with Waistband

Recommendations on fabric: thin woolen fabrics.

You will also need: lining; fusible interfacing; 1 button.

CUTTING:

The word, "beam" used on some patterns means "straight of grain". Some pieces will be cut on the fold, this is noted on the pattern piece. Mark all notches and other design features such as darts, pleats etc. from the pattern onto your fabric.



Seam allowances: 1 cm for all seams.

Main fabric:

1. Back – cut 1
2. Front – cut 2
3. Collar – cut 2
4. Center front facing – cut 2
5. Back neck facing – cut 1
6. Belt – cut 1 on fold

Lining:

1. Back – cut 1
2. Front – cut 2

Attention: front pieces and back pieces from lining are cut using the pattern pieces for the main fabric except for the width of the center front facings and of the back neckline facing correspondingly.

Fusible interfacing:

1. Collar – cut 1
2. Center front facing – cut 2
3. Back neck facing – cut 1
4. Belt – cut 1 on fold

INSTRUCTIONS:

1. Apply fusible interfacing.
2. Pin collar pieces right sides together and sew the ends and outer edge. Trim corners, turn the collar right side out, straighten, and press.
3. Sew shoulder seams and press the seams open.
4. Sew side seams of the center front facings and back neckline facing, and press the seams open. Pin the center front facings to the garment, right sides together, insert the collar between them, and sew along the center front edge and neckline. Clip curves, turn the center front facings to the wrong side, straighten, and press.
5. Sew the shoulder edges of the lining and press the seams open. Sew the lining to the center front facings and back neckline facing. Sew the lower edge of the garment between the marks. Clip curves, turn the garment right side out, straighten, and press.
6. Fold the belt in half lengthwise, right sides together, and sew the ends and the section between the marks. Clip seam allowances near notches, turn the belt right side out, straighten, and press.
7. Sew the outer side of the belt to the garment, fold under the seam allowance of the inner side, and stitch in the ditch along the seam of the outer side.
8. Make a buttonhole on the right side of the belt and sew a button on the left side.

Congratulations – your cape are finished! :)