

If the pattern has a double line around it, the seam allowances are included.

Note: By default, seam allowances are NOT included (single line) and will need to be added when laying out and cutting details.

Seam Allowance: 1 cm on all seams; hem guidelines are printed on pattern.

Important! Please print all the paper patterns and lay them out at the width of fabric you plan to use (usually from 90 to 150 cm) to see how much fabric you will need.

Don't forget to take into account pieces to be duplicated or cut on a fold. When sewing the garment, pay attention to notches. They must match up with corresponding pieces.

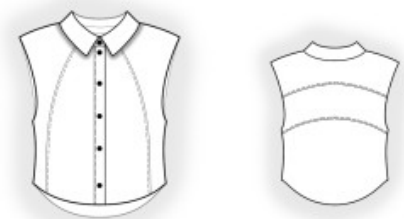
2812 Short Sleeveless Blouse with Decorative Seams

Recommendations on fabric: natural/mixed fabrics suitable for blouses.

You will also need: fusible interfacing; 6 buttons.

CUTTING:

The word, “beam” used on some patterns means “straight of grain”. Some pieces will be cut on the fold, this is noted on the pattern piece. Mark all notches and other design features such as darts, pleats etc. from the pattern onto your fabric.



Seam allowances: all seams 1 cm. Seam allowance along the lower edge of the garment – 1.2 cm.

Main fabric:

1. Upper back – cut 1
2. Center back – cut 1
3. Lower back – cut 1
4. Side front – cut 2
5. Center front – cut 2
6. Placket – cut 2
7. Collar – cut 2

8. Stand collar – cut 2

Fusible interfacing:

1. Placket – cut 2
2. Collar – cut 1
3. Stand collar – cut 1

INSTRUCTIONS:

1. Apply fusible interfacing.
2. Sew upper back to middle back, press towards top, and serge. Sew a decorative stitch along the seam at 0.5 cm. Sew the lower back to the center back, press towards top, and serge. Sew a decorative stitch along the seam at 0.5 cm.
3. Sew center front to side front, press towards center, and serge. Sew a decorative stitch along the seam at 0.5 cm.
4. Sew shoulder seams, press towards the back, and serge.
5. Pin collars together, right sides together, and sew the ends and the outer edge of the collar. Trim away corners, turn the collar right side out, straighten, and press. Pin stand collars together, right sides together, insert the collar between them, and sew, stitching the ends of the stand collar at the same time. Start and stop sewing exactly at the marked line of the seam between the stand collar and the garment. Turn the finished collar right side out and press.
6. Fold the front placket in half, wrong sides together, and press. Pin the edge of the inner placket to the wrong side of the front and sew, pressing seam allowances onto the placket. Turn under the edge of the outer placket and topstitch into the seam of the inner placket.
7. Sew the outer stand collar into the neckline, fold inside the open edge of the inner stand collar, and stitch in the ditch.
8. Cut or use ready-made bias tape, its width should equal 4 cm and its length should equal the length of the armhole + 4 cm. Fold bias tape in half lengthwise, right side out, and press. Pin bias tape onto the armhole edge from the right side and sew. Fold bias tape onto the wrong side and topstitch onto the main piece along the seam. Press seam.

9. Sew side seams, press towards the back, and serge.
10. Serge the lower edge of the garment, press onto the wrong side, and topstitch.
11. Make buttonholes on the right front and on the right stand collar, and sew on buttons on the left one.

Congratulations, your blouse is ready! :)