

If the pattern has a double line around it, the seam allowances are included.

Note: By default, seam allowances are NOT included (single line) and will need to be added when laying out and cutting details.

Seam Allowance: 1 cm on all seams; hem guidelines are printed on pattern.

Important! Please print all the paper patterns and lay them out at the width of fabric you plan to use (usually from 90 to 150 cm) to see how much fabric you will need.

Don't forget to take into account pieces to be duplicated or cut on a fold. When sewing the garment, pay attention to notches. They must match up with corresponding pieces.

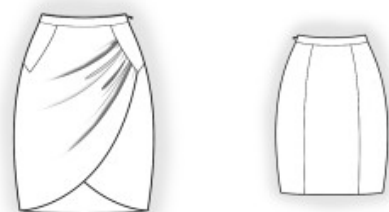
2820 Skirt with Asymmetric Draping

Recommendations on fabric: soft natural/mixed fabric suitable for dresses.

You will also need: fusible interfacing, dress zipper.

CUTTING:

The word, "beam" used on some patterns means "straight of grain". Some pieces will be cut on the fold, this is noted on the pattern piece. Mark all notches and other design features such as darts, pleats etc. from the pattern onto your fabric.



Seam allowances: all seams 1 cm. Seam allowance for hem – 2 cm.

Main fabric:

1. Center back – cut 1
2. Side back – cut 2
3. Front inset – cut 2
4. Right front skirt – cut 1
5. Left front skirt – cut 1
6. Back facing – cut 2
7. Front facing – cut 2

Fusible interfacing:

1. Back facing – cut 1
2. Front facing – cut 1

INSTRUCTIONS:

1. Apply fusible interfacing.
2. Sew side backs to center back, press towards center, and serge. Sew the outer facing to the back skirt, press seam allowances towards the placket.
3. Serge the seam allowances of the lower edges of front skirts, press seam allowances onto wrong side, and topstitch. Sew a gathering stitch along the slanted edge of the front skirt and gather fullness. Pin right front skirt onto left front skirt and baste together along raw edges.
4. Sew front insets to front skirt, slash corners, press seam allowances down, and serge.
5. Serge separately left side edges. Sew the seam from zipper mark down to hem (side edge of back is longer than side edge of front by the width of the hem seam allowance). Press the seam apart. Sew in zipper.
6. Sew right side seam (side edge of back is longer than side edge of front by the width of the hem seam allowance), press towards the back, and serge.
7. Sew the right side seam of the inner facings, press the seam apart, and serge the lower edge. Pin facing to skirt right sides together and sew upper edge. Clip seam allowances, turn the facing onto the wrong side, and press. Sew by hand to the seam allowances of the right side seam and to the zipper tape.
8. Serge the seam allowance along the lower edge of the back, press onto wrong side, and topstitch.

Congratulations – your skirt are finished! :)