

If the pattern has a double line around it, the seam allowances are included.

**Note:** By default, seam allowances are NOT included (single line) and will need to be added when laying out and cutting details.

Seam Allowance: 1 cm on all seams; hem guidelines are printed on pattern.

**Important!** Please print all the paper patterns and lay them out at the width of fabric you plan to use (usually from 90 to 150 cm) to see how much fabric you will need.

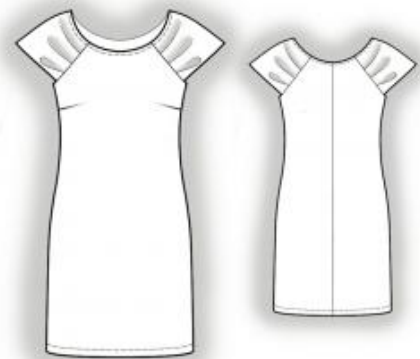
Don't forget to take into account pieces to be duplicated or cut on a fold. When sewing the garment, pay attention to notches. They must match up with corresponding pieces.

## 4023 Dress with draped raglan sleeves

Recommendations on fabric: natural or mixed, medium stretch-knit fabric.

### CUTTING:

The word, "beam" used on some patterns means "straight of grain". Some pieces will be cut on the fold, this is noted on the pattern piece. Mark all notches and other design features such as darts, pleats etc. from the pattern onto your fabric.



Seam allowances: hem, lower edge of sleeve and neckline edge – 1.5 cm, all other seams – 0.7 cm.

### Main fabric:

1. Back part – 2 details
2. Front part – 1 detail on fold
3. Sleeve – 2 details

### INSTRUCTIONS:

Advice: sew knit pieces with special elastic/zig-zag stitches. If you use an overlock, cut seam allowances to 0.6-0.8 cm width. Topstitch hem allowances with double needle to save elasticity.

1. Mark and sew the darts on the front. Sew the center back seam. Serge and press the

seam allowances toward the left.

2. Form soft pleats on the sleeves according to the markings, with the pleat depth directed downward. Baste the pleats. Serge the sleeve hems, turn them to the wrong side, and topstitch. Set the sleeves to the front and back along the armhole markings. Serge and press the seam allowances toward the garment.
3. Sew the side seams. Serge and press the seam allowances toward the back.
4. Serge the bottom edge of the garment, the neckline edge, and the armhole edges. Turn them to the wrong side, press, and topstitch.

Congratulations – your dress are finished! :)