

If the pattern has a double line around it, the seam allowances are included.

**Note:** By default, seam allowances are NOT included (single line) and will need to be added when laying out and cutting details.

Seam Allowance: 1 cm on all seams; hem guidelines are printed on pattern.

**Important!** Please print all the paper patterns and lay them out at the width of fabric you plan to use (usually from 90 to 150 cm) to see how much fabric you will need.

Don't forget to take into account pieces to be duplicated or cut on a fold. When sewing the garment, pay attention to notches. They must match up with corresponding pieces.

## 4044 Jumpsuit with pockets

Recommendations on fabric: well-draping, natural or mixed silk fabrics

You will also need: fusible interfacing; elastic; elastic thread; 5 buttons

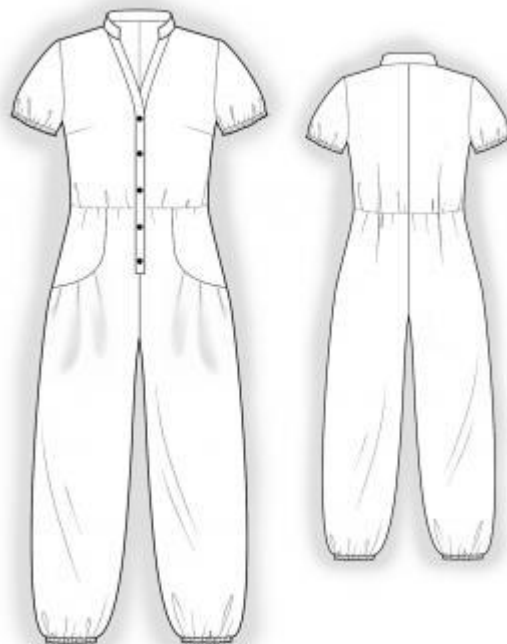
### CUTTING:

The word, "beam" used on some patterns means "straight of grain". Some pieces will be cut on the fold, this is noted on the pattern piece. Mark all notches and other design features such as darts, pleats etc. from the pattern onto your fabric.

Seam allowance: all seams -1 cm, on hem of the garment – 2 cm, hem of sleeve – 1.5 cm.

### Main fabric:

1. Back half – cut 2
2. Front half – cut 2
3. Side-body – cut 2
4. Front – cut 2
5. Placket – cut 4
6. Stand-up Collar – cut 2
7. Sleeve – cut 2
8. Pocket bag – cut 2



Interfacing:

1. Inner stand-up collar
2. Inner plackets

INSTRUCTIONS:

1. Apply fusing to stand-up collar and plackets.
2. Sew darts on back and front. Press bust darts down toward hem, press waist darts toward center.
3. Sew center back seam. Serge and press seam toward left.
4. Make and baste pleats on front half according to markers. Place pocket bag onto front half and sew pocket opening. Clip into curves, turn pocket bag onto wrong side, topstitch pocket bag at 0.1 cm stitch from edge, and press.
5. Place front half onto side-body according to markers. Sew pocket bag to side-body, serge. Tack pocket bag to front half along top and side edges.
6. Sew center seam of front halves, serge, and press seam allowances. Sew front to front halves, serge, and press seam allowances upwards.
7. Pin plackets, right sides together, and sew outer edge. Trim seam allowances, turn placket onto right side, press. Pin plackets to front, right sides together, and stitch exactly up to the corner in lower part. Trim corner, serge and press onto front. Turn plackets onto right side, and lower edges of plackets inside. Sew across plackets bottom edge.
8. Sew side and shoulder seams, serge, and press seam toward back. Sew pant seam, serge, and press seam toward back.
9. Pin stand-up collar, right sides together, and sew outer edge and side edges. Clip into curves, turn stand-up collar onto right side, press.
10. Sew outer stand-up collar into the neckline, turn under seam allowance of inner stand-up collar and topstitch into connecting seam.
11. Sew sleeve seam, serge, and press. Make a gathering stitch along cap of sleeve for ease. Sew sleeve into the armhole, matching notches and adjusting ease. Serge seam and press.
12. Serge bottom edge of pants and sleeves, press onto wrong side and topstitch, leaving

openings for the elastic. Cut desired length of elastic and insert through opening. Sew ends of elastic together. Slipstitch opening closed.

13. Make buttonholes on right placket, sew buttons on left placket.

14. Using elastic thread in the bobbin, sew along the waistline.

Congratulations, your Jumpsuit is ready :)