

If the pattern has a double line around it, the seam allowances are included.

**Note:** By default, seam allowances are NOT included (single line) and will need to be added when laying out and cutting details.

Seam Allowance: 1 cm on all seams; hem guidelines are printed on pattern.

**Important!** Please print all the paper patterns and lay them out at the width of fabric you plan to use (usually from 90 to 150 cm) to see how much fabric you will need.

Don't forget to take into account pieces to be duplicated or cut on a fold. When sewing the garment, pay attention to notches. They must match up with corresponding pieces.

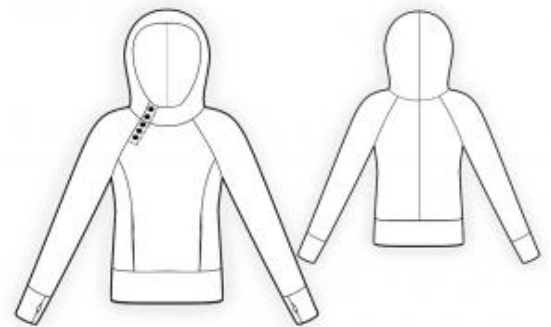
## 4097 Hoodie with Buttons

Recommendations on fabric: knit fabric of middle stretchiness of natural or mixed fibers.

You will also need: 5 buttons.

### CUTTING:

The word, "beam" used on some patterns means "straight of grain". Some pieces will be cut on the fold, this is noted on the pattern piece. Mark all notches and other design features such as darts, pleats etc. from the pattern onto your fabric.



Seam allowances: all seams 1 cm.

### Main fabric:

1. Front – cut 1
2. Side – cut 1 on fold
3. Back – cut 2
4. Waistband – cut 1
5. Right hood – cut 1
6. Left hood – cut 1
7. Left hood facing - cut 1
8. Right hood facing – cut 1
9. Sleeve – cut 2

## 10. Cuff – cut 2

### INSTRUCTIONS:

Advice: sew knit pieces with special elastic/zig-zag stitches. If you use an overlock, cut seam allowances to 0.6-0.8 cm width. Topstitch hem allowances with double needle to save elasticity.

1. Sew the center back seam. Serge and press towards the left.
2. Place pockets on the front, right sides together, and stitch from hem up to the mark. Turn right side out.
3. Sew side panel to front from the top down to the pocket opening. Serge and press towards front. Sew top edges of the pocket. Serge.
4. Cut seam allowance of closure on the left sleeve and stitch to front. Serge. Serge lower edges of closure on the right sleeve and front. Stitch right sleeve to front, finishing near the closure. Serge. Sew sleeves into the back armhole. Serge.
5. Sew side seams and sleeve seams as one. Serge.
6. Fold cuff in half lengthwise. Sew sections 1, 2, and 3, leaving two slits. Press seam allowances open. Sew cuff into a ring and fold in half. Turn slit seam allowances inside and slipstitch openings by hand. Attach cuff to sleeve, matching marks with sleeve seam. The slit for the finger should be on the front side. Serge.
7. Sew hood facing seams. Press seam open. Serge the outer edge of the facings. Sew hood into neckline. Place facing onto hood and sew the front vertical seam. Press seam open. Press closure seam allowances on front and sleeve to the wrong side. Turn facing to right side and topstitch the hood edge. Sew lower edge of facing into neckline and serge neckline seam. Topstitch front and left hood, fixing seam allowance of closure at the same time. Topstitch sleeve and right hood, fixing seam allowance of closure at the same time.
8. Sew waistband into a ring. Fold in half lengthwise and, while slightly stretching, sew to lower edge of hoodie. Serge.
9. Make buttonholes on the front and left hood, sew buttons on the right side.

Congratulations – your hoodie are finished! :)