

If the pattern has a double line around it, the seam allowances are included.

Note: By default, seam allowances are NOT included (single line) and will need to be added when laying out and cutting details.

Seam Allowance: 1 cm on all seams; hem guidelines are printed on pattern.

Important! Please print all the paper patterns and lay them out at the width of fabric you plan to use (usually from 90 to 150 cm) to see how much fabric you will need.

Don't forget to take into account pieces to be duplicated or cut on a fold. When sewing the garment, pay attention to notches. They must match up with corresponding pieces.

4099 Blouse with wide sleeves

Recommendations on fabric:
natural or mixed, stretch-knit
fabric

You will also need: elastic of 1
cm width

CUTTING:

The word, “beam” used on some patterns means “straight of grain”. Some pieces will be cut on the fold, this is noted on the pattern piece. Mark all notches and other design features such as darts, pleats etc. from the pattern onto your fabric.

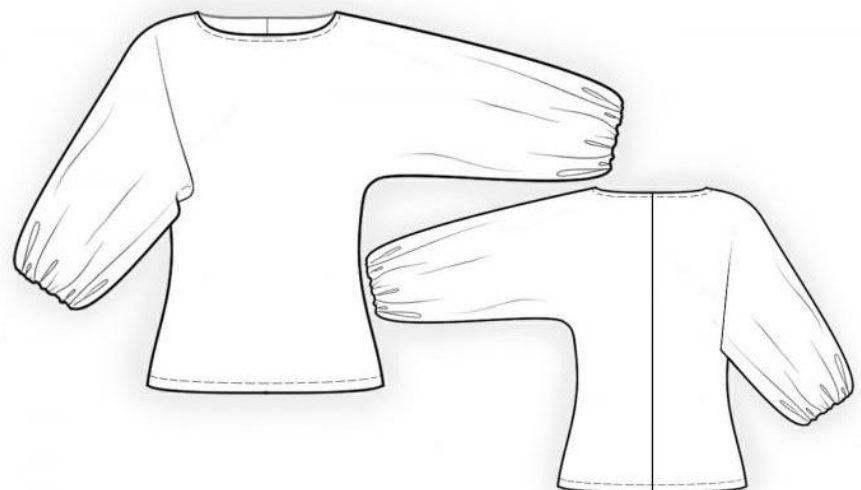
Advice:

Knit fabric pieces are sewn together with special stretch-stitch or narrow zig-zag stitch. Seam allowance on hem is stitched with twin needles to save stretchiness. Pieces can also be sewn together with 3 or 4 – thread serger. When serging, cut seam allowances to 0.6 – 0.8 cm

Main fabric:

1. Front – cut 1 on fold
2. Back - cut 2

INSTRUCTIONS:



1. Sew center back seam. Serge and press seam toward left.
2. Sew shoulder seams and top sleeve seams as one. Serge and press seam toward back. Sew side seams and lower sleeve seams as one. Serge and press toward back.
3. Serge neckline edge. Turn seam allowance under and topstitch.
4. Serge lower edge of sleeve. Create a casing by turning seam allowance under and topstitching, leave an opening for inserting elastic. Thread elastic through casing, adjust to fit, sew ends together, and sew opening closed.
5. Serge bottom edge of garment, turn onto wrong side, press, and topstitch.

Congratulations, your blouse is ready! :)