

If the pattern has a double line around it, the seam allowances are included.

Note: By default, seam allowances are NOT included (single line) and will need to be added when laying out and cutting details.

Seam Allowance: 1 cm on all seams; hem guidelines are printed on pattern.

Important! Please print all the paper patterns and lay them out at the width of fabric you plan to use (usually from 90 to 150 cm) to see how much fabric you will need.

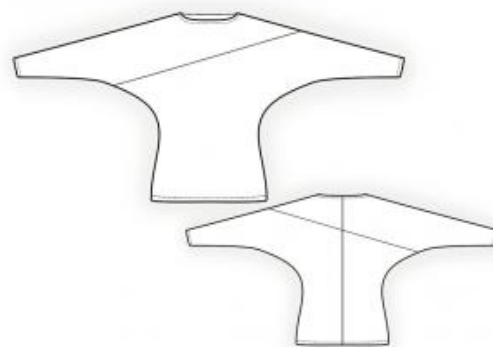
Don't forget to take into account pieces to be duplicated or cut on a fold. When sewing the garment, pay attention to notches. They must match up with corresponding pieces.

4133 Blouse with Batwing Sleeves

Recommendations on fabric: medium to high stretch fabric in two colors.

CUTTING:

The word, "beam" used on some patterns means "straight of grain". Some pieces will be cut on the fold, this is noted on the pattern piece. Mark all notches and other design features such as darts, pleats etc. from the pattern onto your fabric.



Seam allowances: seam of sleeve hem – 1.5 cm, seam along neckline – 1.5 cm, seam allowance on hem – 2 cm, all other seams – 0.7 cm.

Fabric 1:

1. Upper front– cut 1
2. Upper left back – cut 1
3. Upper right back – cut 1

Fabric 2:

1. Lower front - cut 1
2. Lower left back – cut 1
3. Lower right back – cut 1

INSTRUCTIONS:

Advice: sew knit pieces with special elastic/zig-zag stitches. If you use an overlock, cut seam allowances to 0.6-0.8 cm width. Topstitch hem allowances with double needle to save elasticity.

1. Sew top and bottom front parts together. Serge and press seam downwards.
2. Sew center seam of upper left and right backs. Serge and press seam toward left side. Sew center seam of lower left and right backs. Serge and press seam toward left side.
3. Sew upper and lower backs together. Serge and press seam downwards.
4. Sew shoulder seams while attaching the upper edge of sleeve. Serge. Sew side seams while attaching the lower edge of sleeve. Serge.
5. Serge neckline, turn under, press, and topstitch.
6. Serge hem of garment and hem of sleeve, turn under, press, and topstitch.

Congratulations – your blouse are finished! :)