

If the pattern has a double line around it, the seam allowances are included.

Note: By default, seam allowances are NOT included (single line) and will need to be added when laying out and cutting details.

Seam Allowance: 1 cm on all seams; hem guidelines are printed on pattern.

Important! Please print all the paper patterns and lay them out at the width of fabric you plan to use (usually from 90 to 150 cm) to see how much fabric you will need.

Don't forget to take into account pieces to be duplicated or cut on a fold. When sewing the garment, pay attention to notches. They must match up with corresponding pieces.

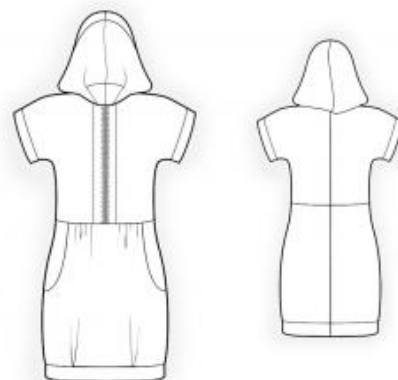
4151 Hooded Tunic with Zipper

Recommendations on fabric: medium to high stretch-knit fabric, two-way stretch, lycra.

You will also need: zipper.

CUTTING:

The word, "beam" used on some patterns means "straight of grain". Some pieces will be cut on the fold, this is noted on the pattern piece. Mark all notches and other design features such as darts, pleats etc. from the pattern onto your fabric.



Seam allowances: on hood – 2 cm, all other seam allowances – 0.7 cm.

Main fabric:

1. Upper front bodice – cut 2
2. Lower front skirt – cut 1 on fold
3. Zipper placket – cut 4
4. Side body/pocket – cut 2
5. Pocket bag – cut 2
6. Upper back bodice – cut 2
7. Lower back skirt – cut 2
8. Lower band – cut 1

9. Cuff – cut 2

10. Hood – cut 2

INSTRUCTIONS:

Advice: sew knit pieces with special elastic/zig-zag stitches. If you use an overlock, cut seam allowances to 0.6-0.8 cm width. Topstitch hem allowances with double needle to save elasticity.

1. Sew the pocket bag to the lower front skirt. Turn to the wrong side, press, and topstitch. Sew the side pocket piece to the pocket bag. Serge the edges and baste to the top and side edges.
2. Make a gathering stitch along the top edge of the lower front skirt from the marker toward the center and gather the fullness.
3. Pin the zipper plackets right sides together and insert the zipper between them. Sew the upper edge, catching the zipper tape, then sew along the longer edge to secure the zipper. Turn right side out and press. Sew the placket to the center front; serge the edges.
4. Sew the upper front bodice to the lower front skirt. Serge and press the seam toward the bodice. Use a stretch stitch.
5. Sew the center seam of the upper back bodice and the center seam of the lower back skirt. Serge and press the seams toward the left. Sew the upper back bodice to the lower back skirt. Serge and press the seam toward the bodice. Use a stretch stitch.
6. Sew the shoulder and side seams. Serge and press the seams toward the back.
7. Sew the cuff into a ring, right sides together. Fold in half lengthwise and sew to the sleeve. Serge and press the seam toward the garment.
8. Make an inverted pleat on the lower front skirt along the hem and baste it. Sew the lower band into a ring, right sides together. Fold in half lengthwise and sew to the garment. Serge and press the seam toward the skirt.
9. Sew the center seam of the hood. Serge and press. Serge the outer edge of the hood, turn it under, and topstitch. Sew the hood to the neckline. Serge and press the seam toward the neckline. Tack the seam to the neckline seam allowance near the zipper placket.

Note: The bodice is form-fitting. Make sure your fabric has sufficient stretch and that you can fit your chest and shoulders through the waist seam.

Congratulations – your tunic are finished! :)