

If the pattern has a double line around it, the seam allowances are included.

**Note:** By default, seam allowances are NOT included (single line) and will need to be added when laying out and cutting details.

Seam Allowance: 1 cm on all seams; hem guidelines are printed on pattern.

**Important!** Please print all the paper patterns and lay them out at the width of fabric you plan to use (usually from 90 to 150 cm) to see how much fabric you will need.

Don't forget to take into account pieces to be duplicated or cut on a fold. When sewing the garment, pay attention to notches. They must match up with corresponding pieces.

## 4161 Blouse with Hood and Drawstring

Recommendations on fabric: natural or mixed, medium stretch knit fabric.

You will also need: decorative cord.

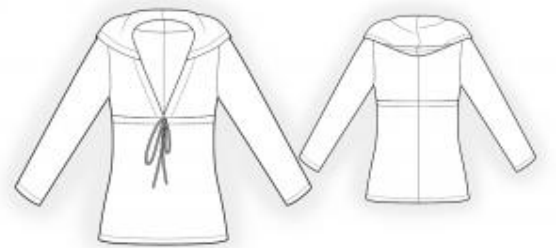
### CUTTING:

The word, "beam" used on some patterns means "straight of grain". Some pieces will be cut on the fold, this is noted on the pattern piece. Mark all notches and other design features such as darts, pleats etc. from the pattern onto your fabric.

Seam allowances: top edges of lower front and of back – 2 cm; lower edges of top of front and of back – 2 cm; front stand edge - 0 cm; outer edge of hood – 3 cm; lower edges and edges of sleeve – 2 cm; all other edges – 0.7 cm.

### Main fabric:

1. Upper front – cut 2
2. Upper back – cut 2
3. Lower front – cut 1 on fold
4. Lower back – cut 2
5. Sleeve – cut 2
6. Hood – cut 2



## INSTRUCTIONS:

Advice: sew knit pieces with special elastic/zig-zag stitches. If you use an overlock, cut seam allowances to 0.6-0.8 cm width. Topstitch hem allowances with double needle to save elasticity.

1. Sew center back seam on upper and lower backs, serge, and press toward left.
2. Sew shoulder seams. Serge and press toward back.
3. Sew hood seam, serge, and press toward left.
4. Sew hood into neckline, serge seam.
5. Serge edge of upper center fronts and hood, turn onto wrong side, and topstitch.
6. Sew sleeve into open armhole, matching notches.
7. Sew sleeve seam and side seam of upper part in one stitch.
8. Make buttonholes on lower front. Sew side seams of lower front and back. Sew upper and lower sections together at 2–3 cm. Serge and press seam downwards. Stitch 0.5 cm from seam allowance edge to create the casing.
9. Serge lower edge of garment and sleeve edges. Turn seam allowances onto wrong side and topstitch.
10. Thread the cord through the casing.

Congratulations – your blouse are finished! :)