

If the pattern has a double line around it, the seam allowances are included.

Note: By default, seam allowances are NOT included (single line) and will need to be added when laying out and cutting details.

Seam Allowance: 1 cm on all seams; hem guidelines are printed on pattern.

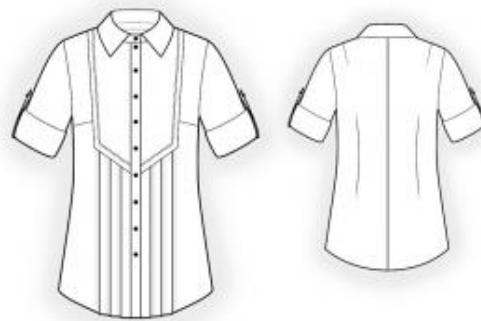
Important! Please print all the paper patterns and lay them out at the width of fabric you plan to use (usually from 90 to 150 cm) to see how much fabric you will need.

Don't forget to take into account pieces to be duplicated or cut on a fold. When sewing the garment, pay attention to notches. They must match up with corresponding pieces.

4269 Shirt Blouse with Short Sleeves

Recommendations on fabric: natural / mixed blouse fabric (cotton, viscose, polyester).

You will also need: fusible interfacing, trim (approximate length is mentioned on front part pattern), 12 buttons.



CUTTING:

The word, “beam” used on some patterns means “straight of grain”. Some pieces will be cut on the fold, this is noted on the pattern piece. Mark all notches and other design features such as darts, pleats etc. from the pattern onto your fabric.

Seam allowances: hem of the garment and hem of sleeve – 1.5 cm, all other seams – 1 cm.

Main fabric:

1. Back – cut 2
2. Front – cut 2
3. Front inset – cut 2
4. Sleeve – cut 2
5. Collar – cut 2
6. Collar-stand – cut 2

7. Sleeve strap – cut 2
8. Placket – cut 2

Fusible interfacing:

1. Outer collar – cut 1
2. Inner collar-stand – cut 1
3. Placket – cut 2
4. Sleeve strap – cut 2

INSTRUCTIONS:

1. Apply fusible interfacing to the outer collar, inner collar stand, plackets, and sleeve tabs.
2. Place the outer and inner collar right sides together. Sew the ends and outer edge of the collar. Trim corners, turn the collar right side out, straighten, and press. Place the collar stands right sides together, insert the collar between them, match notches, and sew – making sure to include the collar stand ends. Start and stop stitching exactly at the marked collar stand seam line. Turn the collar right side out and press.
3. Sew darts on the front pieces and press them downward. Sew darts on the back piece and press them toward the center. Sew the center back seam, finish or serge, and press the seam allowances to the left.
4. Topstitch the trim onto the front inset according to the markings. Make and baste pleats on the front inset (pleats should be pressed toward the center). Sew the front inset to the front, trimming corners. Finish or serge the seam and press it toward the inset.
5. Fold plackets in half lengthwise, wrong sides together. Sew the raw edges of the plackets to the front edge, press the seams toward the placket. Turn the inner placket edge inward and topstitch into the connecting seam.
6. Sew the shoulder seams, finish or serge, and press toward the back.
7. Sew the outer collar stand with the collar into the neckline. Turn under the seam allowance of the inner collar stand and topstitch into the connecting seam of the outer collar stand. Topstitch along the collar stand and collar 0.1 cm from the edge.
8. Fold the sleeve tab right sides together and sew along the long and short edges. Trim seam allowances at the corners, turn right side out, and press. Make a

buttonhole. Sew the tab to the wrong side of the sleeve according to markings. Sew a button on the right side.

9. Sew the sleeve into the open armhole, finish or serge the seam allowance, and press.
10. Sew the underarm and side seam in one continuous line, finish or serge the seam, and press toward the back.
11. Serge the hem of the garment and the sleeve, press under, and topstitch.
12. Make buttonholes on the right front and sew buttons on the left front.

Congratulations, your shirt is ready! :)