

If the pattern has a double line around it, the seam allowances are included.

Note: By default, seam allowances are NOT included (single line) and will need to be added when laying out and cutting details.

Seam Allowance: 1 cm on all seams; hem guidelines are printed on pattern.

Important! Please print all the paper patterns and lay them out at the width of fabric you plan to use (usually from 90 to 150 cm) to see how much fabric you will need.

Don't forget to take into account pieces to be duplicated or cut on a fold. When sewing the garment, pay attention to notches. They must match up with corresponding pieces.

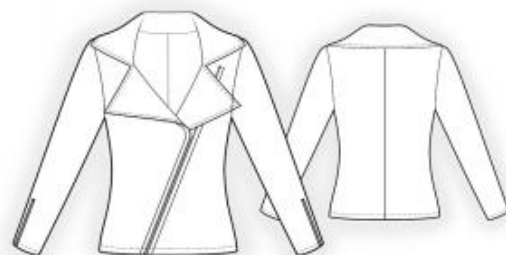
4336 Knitted Jacket with Asymmetric Zipper Closure

Recommendations on fabric: knit fabric of medium stretchiness.

You will also need: fusible interfacing, a long separating zipper and two sleeve zippers (length is shown on corresponding pattern pieces).

CUTTING:

The word, "beam" used on some patterns means "straight of grain". Some pieces will be cut on the fold, this is noted on the pattern piece. Mark all notches and other design features such as darts, pleats etc. from the pattern onto your fabric.



Seam allowances: on hem of the garment and hem of sleeve – 1.5 cm, all other seams – 0.8 cm.

Main fabric:

1. Back – cut 2
2. Left front – cut 1
3. Right front – cut 1
4. Sleeve – cut 2
5. Collar – cut 2
6. Button stand of left front – cut 1
7. Button stand of right front – cut 1

Interfacing:

1. Collar – cut 1
2. Button stand of left front – cut 1
3. Button stand of right front – cut 1

Advice: Knit fabric details are sewn together with special elastic, narrow zig-zag stitch, or can be serged using an overlock machine. Seam allowance on hem is stitched with double needle to save stretchiness.

INSTRUCTIONS:

Advice: sew knit pieces with special elastic/zig-zag stitches. If you use an overlock, cut seam allowances to 0.6-0.8 cm width. Topstitch hem allowances with double needle to save elasticity.

1. Apply fusible interfacing to collar and button stand.
2. Sew center back seam. Serge seam allowance.
3. Sew darts on fronts. Press towards hem.
4. Sew shoulder seams. Serge seams and press towards back.
5. Sew lower collar into neckline. Press seam allowance onto collar. Serge top and outer edges of button stands. Stitch button stands to top collar. Press seam open. Place button stands/top collar onto fronts, right sides together, matching marks and seams. Sew seam. Turn button stand and collar to wrong side and press. Turn lower edge of top collar inside and topstitch into lower collar connecting seam. Place separating zipper on right button stand and stitch so that zipper teeth extend 0.5 cm beyond the button stand edge. Topstitch onto right front.
6. For left part of zipper, place along diagonal marking for zipper on left front and topstitch.
7. Serge sleeve hem. Turn seam allowance inside and topstitch. Topstitch short zipper on sleeve according to markings. Sew sleeve into open armhole, matching notches. Serge seam allowance. Sew side seam and sleeve seam in one step. Serge seam allowance.
8. Serge hem of garment. Press onto wrong side, rounding button stand, and topstitch.

Congratulations – your jacket are finished! :)