

If the pattern has a double line around it, the seam allowances are included.

**Note:** By default, seam allowances are NOT included (single line) and will need to be added when laying out and cutting details.

Seam Allowance: 1 cm on all seams; hem guidelines are printed on pattern.

**Important!** Please print all the paper patterns and lay them out at the width of fabric you plan to use (usually from 90 to 150 cm) to see how much fabric you will need.

Don't forget to take into account pieces to be duplicated or cut on a fold. When sewing the garment, pay attention to notches. They must match up with corresponding pieces.

## 4398 Windbreaker with pockets and zipper

Recommendations on fabric: fleece.

You will also need: zipper (length is shown on front pattern piece).

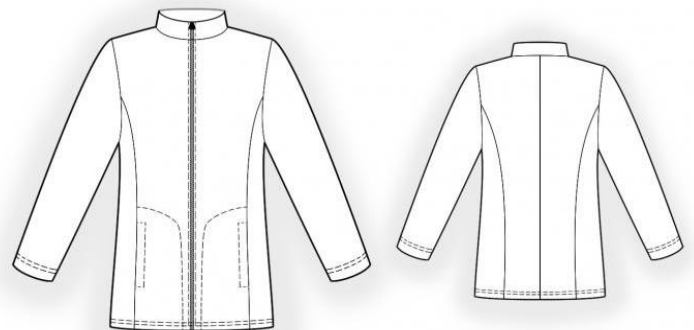
### CUTTING:

The word, "beam" used on some patterns means "straight of grain". Some pieces will be cut on the fold, this is noted on the pattern piece. Mark all notches and other design features such as darts, pleats etc. from the pattern onto your fabric.

Seam allowance: on hems – 2.0 cm; on hem of pocket bag and hem of front band facing – 0 cm; on three pocket facing sides – 0.5 cm; all other seams - 1 cm

### Main fabric:

1. Central back - cut 2
2. Side back – cut 2
3. Central front – cut 2
4. Side front – cut 2
5. Sleeve – cut 2
6. Collar – cut 1
7. Pocket bag – cut 2
8. Pocket facing – cut 2
9. Front band facing – cut 2



Advice:

Knit fabric pieces are sewn together with special stretch-stitch or narrow zig-zag stitch. Seam allowance on hem is stitched with twin needles to save stretchiness. Pieces can also be sewn together with 3 or 4 – thread serger. When serging, cut seam allowances to 0.6 – 0.8 cm.

INSTRUCTIONS:

1. Serge pocket facing on three sides: two short sides and one long. Lay facing onto right side of central part and sew. Start and end stitch exactly at marked line of pocket entrance. Slash seam allowances at marks. Turn facing to wrong side and topstitch on three sides from the right side. Serge curved edge of the pocket bag. Lay central part onto bag and pin. Stitch from right side. Sew side and central fronts. Serge seam allowances and press toward center.
2. Sew side and central backs. Serge seam allowances and press toward center. Sew middle edge of back. Serge seam allowance and press to left.
3. Sew shoulder edges. Serge seam allowance and press to back. Sew sleeves into armholes. Serge seam allowances.
4. Sew side seam together with sleeve seam. Serge seam allowances.
5. Serge shoulder and outer edges of front band facing. Sew outer side of collar into neckline. Sew inner side of collar into neckline of front band facings. Direct seam allowance on collar. Place fronts and front band facings right sides together, insert zipper between details and stitch front band edge. Turn front band facings to wrong side. Turn inside seam allowance of inner collar on back section and topstitch into connecting seam.
6. Serge hem and hem of sleeve, turn under and topstitch with two parallel stitches. Tack shoulder edge of front band facing to garment.

Congratulations, your jacket is ready! :)