

If the pattern has a double line around it, the seam allowances are included.

**Note:** By default, seam allowances are NOT included (single line) and will need to be added when laying out and cutting details.

Seam Allowance: 1 cm on all seams; hem guidelines are printed on pattern.

**Important!** Please print all the paper patterns and lay them out at the width of fabric you plan to use (usually from 90 to 150 cm) to see how much fabric you will need.

Don't forget to take into account pieces to be duplicated or cut on a fold. When sewing the garment, pay attention to notches. They must match up with corresponding pieces.

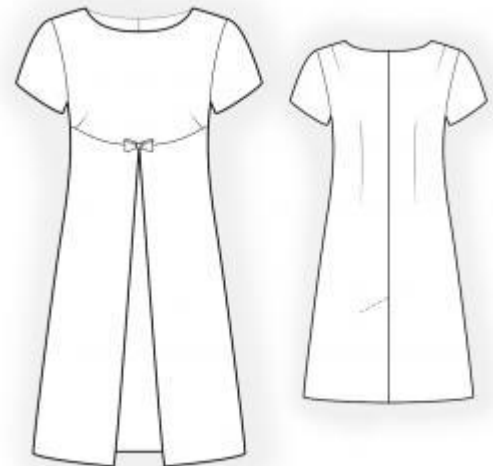
## 4521 Dress with front in two layers

Recommendations on fabric: natural or mixed dress fabric.

You will also need: fusible interfacing, invisible zipper, decoration.

### CUTTING:

The word, "beam" used on some patterns means "straight of grain". Some pieces will be cut on the fold, this is noted on the pattern piece. Mark all notches and other design features such as darts, pleats etc. from the pattern onto your fabric.



Seam allowances: vent edge – 6.0 cm; upper and lower edges of fall part – 2 cm; hem – 2 cm; hem of sleeve – 1.2 cm.

### Main fabric:

1. Back – cut 2
2. Front yoke – cut 1
3. Lower front – cut 1
4. Fall part (front overlay) – cut 2
5. Sleeve – cut 2
6. Front neck facing – cut 1
7. Back neck facing – cut 2

Fusible interfacing:

1. Front neck facing – cut 1
2. Back neck facing – cut 2

INSTRUCTIONS:

1. Apply fusible interfacing to facings.
2. Sew shoulder and waist darts on backs and lower front, press darts toward center. Sew bust darts on front yoke, press downwards and serge.
3. Cut off 5 cm on left lower back along vertical vent edge. Apply fusible interfacing to vent from the wrong side on both sides of lower back. On right side mark center seam line (vent fold line). Press left part along vent fold line. On right, press to wrong side only allowance of right side of vent (6 cm). Match left and right lower backs on center seam and fasten-on upper edge of vent. Serge vent allowances. Sew center back seam from mark to vent corner. Trim corner of vent seam allowance on right side. Press apart center seam, serge, press vent allowances and fasten them on right side with machine stitch. Sew in zipper.
4. Serge center edge of fall part, fold to wrong side, press and topstitch. Serge lower edge of fall part, fold to wrong side, press and topstitch. Lay fall part onto lower front and fasten on upper and side edges. Then sew as one piece.
5. Sew front yoke to lower front, serge, and press seam toward yoke.
6. Sew shoulder and side seams, serge, and press seams toward back.
7. Sew shoulder seams of facings, press seams open. Serge outer edge. Place facing onto dress neck right sides together. Stitch back and front neck edge. Clip into curves, trim corners, and understitch. Press and tack facing to shoulder seams and zipper tape.
8. Sew sleeve seams, serge, and press seam. Make a gathering stitch along cap of sleeve to adjust ease. Sew sleeves into armholes matching notches and adjusting ease. Serge and press seams.
9. Serge hem of sleeve, fold to wrong side, press, and topstitch. Serge hem of dress, fold to wrong side, press, and slipstitch.
10. Sew on decoration.

Congratulations, your dress is ready! :)