

If the pattern has a double line around it, the seam allowances are included.

Note: By default, seam allowances are NOT included (single line) and will need to be added when laying out and cutting details.

Seam Allowance: 1 cm on all seams; hem guidelines are printed on pattern.

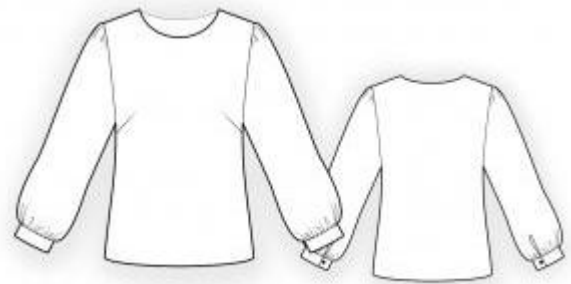
Important! Please print all the paper patterns and lay them out at the width of fabric you plan to use (usually from 90 to 150 cm) to see how much fabric you will need.

Don't forget to take into account pieces to be duplicated or cut on a fold. When sewing the garment, pay attention to notches. They must match up with corresponding pieces.

4543 Blouse with cuffs

Recommendations on fabric: natural or mixed fabric suitable for blouses.

You will also need: fusible interfacing, two buttons.



.CUTTING:

The word, "beam" used on some patterns means "straight of grain". Some pieces will be cut on the fold, this is noted on the pattern piece. Mark all notches and other design features such as darts, pleats etc. from the pattern onto your fabric.

Seam allowances: on hem – 2.0 cm, other seams – 1 cm

Main fabric:

1. Back – cut 1 on fold
2. Front – cut 1 on fold
3. Sleeve – cut 2
4. Cuff – cut 2
5. Back neck facing – cut 1
6. Front neck facing – cut 1

Fusible interfacing:

1. Cuff - cut 2
2. Back neck facing - cut 1
3. Front neck facing - cut 1

INSTRUCTIONS:

1. Apply fusible interfacing to listed pieces.
2. Sew the chest darts and press downwards.
3. Sew side and shoulder seams. Serge and press seams towards back.
4. Sew shoulder seams of neck facings. Press seams open. Serge outer edge of facing. Place facing on neckline right sides together and sew along neckline. Trim seam, turn facing to wrong side, straighten and press. Baste facing to shoulder seams.
5. Make a cut on sleeve according to marking. Cut a bias tape from main fabric of 4 cm wide. Length is equal to doubled cut length + 4 cm. Fold bias tape in half lengthwise and press. Press outer edges towards center. Finish the cut with bias tape.
6. Sew sleeve seam, press and serge. Make a gathering stitch along sleeve cap to adjust ease.
7. Fold cuff in half along center line, right sides together, and sew short sides stopping 1 cm from lower edge. Clip horizontally where stitching ends., Turn cuff out and press. Sew outer edge of cuff to sleeve. Turn inner edge under and topstitch into connecting seam.
8. Sew sleeve into armhole matching notches and adjusting ease. Serge and press seam.
9. Turn lower edge of blouse under twice at 1 cm and topstitch.
10. Make buttonholes on cuffs and sew buttons.

Congratulations, your blouse is ready! :)