

If the pattern has a double line around it, the seam allowances are included.

Note: By default, seam allowances are NOT included (single line) and will need to be added when laying out and cutting details.

Seam Allowance: 1 cm on all seams; hem guidelines are printed on pattern.

Important! Please print all the paper patterns and lay them out at the width of fabric you plan to use (usually from 90 to 150 cm) to see how much fabric you will need.

Don't forget to take into account pieces to be duplicated or cut on a fold. When sewing the garment, pay attention to notches. They must match up with corresponding pieces.

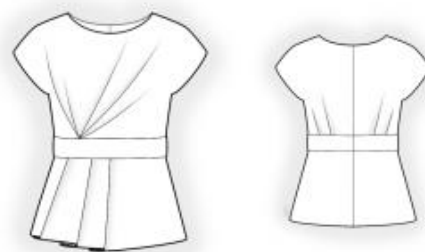
4546 Blouse with Peplum and Asymmetric Pleat

Recommendations on fabric: natural or mixed heavy-weight fabric suitable for blouses.

You will also need: invisible zipper.

CUTTING:

The word, “beam” used on some patterns means “straight of grain”. Some pieces will be cut on the fold, this is noted on the pattern piece. Mark all notches and other design features such as darts, pleats etc. from the pattern onto your fabric.



Seam allowances: on hem – 1.2 cm, other seams – 1 cm.

Main fabric:

1. Upper back – cut 2
2. Back insert – cut 2
3. Lower back – cut 2
4. Upper front – cut 1
5. Front insert – cut 1
6. Lower front – cut 1

INSTRUCTIONS:

1. Make and secure pleats on the upper backs, directing the pleats toward the side seams. Sew back inserts to the upper backs. Serge and press the seams toward the inserts. Sew lower backs to the inserts. Serge and press the seams toward the inserts.
2. Serge center back edges separately. Sew the center back seam from the zipper mark down to the hem. Press the seam open. Sew in the zipper.
3. Make and secure pleats on the upper front (two pleats on the right and three pleats on the left), directing the pleats toward the side seams. Make and secure pleats on the lower front, directing them toward the side seams. Sew the front insert to the upper front. Serge and press the seam toward the insert. Sew the front insert to the lower front. Serge and press the seam toward the insert.
4. Sew shoulder seams. Serge and press the seams toward the back.
5. Cut a bias tape 4 cm wide and as long as the armhole + 4 cm. Fold the bias tape in half lengthwise, right side out, and press. Place the bias tape along the armhole from the right side and sew. Turn the bias tape to the inside and topstitch along the fold onto the blouse.
6. Cut a bias tape 4 cm wide and as long as the neckline + 4 cm. Fold the bias tape in half lengthwise, right side out, and press. Place the bias tape along the neckline from the right side and sew. Turn the bias tape to the inside and topstitch along the fold onto the blouse.
7. Sew side seams. Serge and press the seams toward the back.
8. Serge the lower edge of the blouse, press the seam allowance under, and topstitch.

Congratulations, your blouse is ready! :)