

If the pattern has a double line around it, the seam allowances are included.

Note: By default, seam allowances are NOT included (single line) and will need to be added when laying out and cutting details.

Seam Allowance: 1 cm on all seams; hem guidelines are printed on pattern.

Important! Please print all the paper patterns and lay them out at the width of fabric you plan to use (usually from 90 to 150 cm) to see how much fabric you will need.

Don't forget to take into account pieces to be duplicated or cut on a fold. When sewing the garment, pay attention to notches. They must match up with corresponding pieces.

4614 Bolero Jacket with Shawl Collar

Recommendations on fabric: natural or mixed suiting fabric.

You will also need: fusible interfacing, raglan shoulder pads, 2 hooks with eyelets.

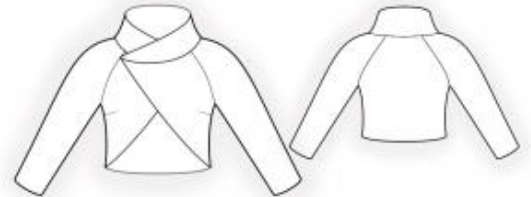
CUTTING:

The word, "beam" used on some patterns means "straight of grain". Some pieces will be cut on the fold, this is noted on the pattern piece. Mark all notches and other design features such as darts, pleats etc. from the pattern onto your fabric.

Seam allowances: all seams 1 cm, lower edge of sleeves – 3 cm.

Main fabric:

1. Back – cut 1 on fold
2. Front – cut 2
3. Sleeve – cut 2
4. Front facing – cut 2
5. Back hem facing – cut 1
6. Collar – cut 2
7. Back neck facing – cut 1



Fusible interfacing:

1. Front facing – cut 2
2. Back neck facing – cut 1
3. Collar – cut 1
4. Back hem facing – cut 1

INSTRUCTIONS:

1. Apply fusible interfacing to the listed pieces as well as to the lower edge of the sleeves.
2. Sew dart on sleeve. Trim bulk to 1 cm and press open.
3. Sew darts on fronts. Press bulk upwards.
4. Sew back part of sleeve to back, press seam open. Sew front part of sleeve to front, press seam open. Sew sleeve and side seam with one continuous stitch, press seam open.
5. Sew outer collar into neckline. Sew front facing to back neck facing. Sew inner collar into neckline of facing. Press seams open.
6. Sew facing to back hem facing, press seams open. Pin facing, right sides together, to garment. Sew along front edge, collar, and lower back edge. Trim seam in corners, turn right side out and straighten. Press facings under and press collar. Tack collar together along neckline connecting seam. Slipstitch hem facing to back.
7. Sew in shoulder pads.
8. Sew a hook and eye on inner and outer fronts.

Congratulations – your bolero are finished! :)