

If the pattern has a double line around it, the seam allowances are included.

**Note:** By default, seam allowances are NOT included (single line) and will need to be added when laying out and cutting details.

Seam Allowance: 1 cm on all seams; hem guidelines are printed on pattern.

**Important!** Please print all the paper patterns and lay them out at the width of fabric you plan to use (usually from 90 to 150 cm) to see how much fabric you will need.

Don't forget to take into account pieces to be duplicated or cut on a fold. When sewing the garment, pay attention to notches. They must match up with corresponding pieces.

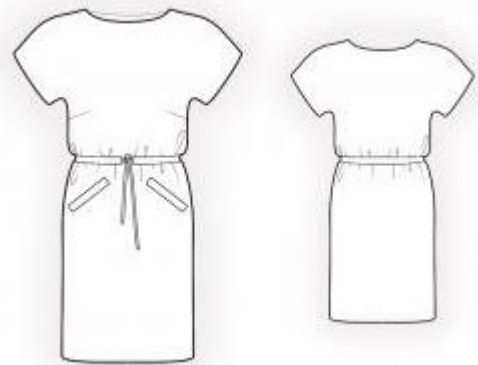
## 4637 Tunic with drawstring waist

Recommendations on fabric: low to medium stretch-knit, natural or mixed fabric.

You will also need: knit fusible interfacing.

CUTTING:

The word, "beam" used on some patterns means "straight of grain". Some pieces will be cut on the fold, this is noted on the pattern piece. Mark all notches and other design features such as darts, pleats etc. from the pattern onto your fabric.



Seam allowances: hem – 1.5 cm, drawstring edges - 0 cm, other seams – 0.7 cm.

### Main fabric:

1. Front - cut 1 on fold
2. Back - cut 1 on fold
3. Drawstring - cut 1
4. Off-set welt - cut 2
5. Big pocket bag - cut 2
6. Small pocket bag - cut 2

### Fusible interfacing:

1. Off-set welt - cut 2

## INSTRUCTIONS:

Advice: Knit fabric pieces are sewn together with special elastic or narrow zig-zag stitch. Seam allowance on hem is stitched with twin needles to save stretchiness. Pieces can also be sewn together with 3 or 4 – thread serger. When serging, cut seam allowances to 0.6 – 0.8 cm.

1. Apply fusible interfacing to welts.
2. Sew darts on front, press bulk upwards.
3. Mark pocket location on fronts. Press welt in half lengthwise wrong sides together. Topstitch small pocket bag on inner side of off-set welt. Sew off-set welt to front on lower line of pocket marking. Sew big pocket bag to front on upper line of pocket marking. End stitching at short lines of marking. Cut pocket opening. Make cuts to corners at pocket opening ends. Turn off-set welt and big pocket bag to inside through the opening. Fasten pocket ends from wrong side with double stitch. Sew pocket bags together.
4. Sew shoulder seams. Serge and press towards back.
5. Sew sleeve and side seam with one continuous stitch. Serge and press seams towards back.
6. Turn ends of drawstring under at 1 cm and topstitch. Press long edges of drawstring under at 1 cm. Pin drawstring to right side of front and back according to marking and topstitch at 0.1 cm from the edge.
7. Cut a bias tape of 4 cm wide. Length is equal to neckline length + 5 cm. Fold bias tape in half lengthwise wrong sides together and press. Place bias tape along neckline from right side and sew. Turn bias tape to inside, trim seam and topstitch along the fold. Press.
8. Serge hem and lower edge of sleeve, fold to wrong side, press and topstitch.
9. Cut a tie/belt (approximate length is equal to hip circumference + 30 cm) of 4 cm wide. Press tie/belt in half lengthwise wrong sides together. Unfold and turn edges to center line and press. Then fold again in half and topstitch at 0.1 cm from the edge. Thread tie through drawstring.

Congratulations, your tunic is ready! :)