

If the pattern has a double line around it, the seam allowances are included.

Note: By default, seam allowances are NOT included (single line) and will need to be added when laying out and cutting details.

Seam Allowance: 1 cm on all seams; hem guidelines are printed on pattern.

Important! Please print all the paper patterns and lay them out at the width of fabric you plan to use (usually from 90 to 150 cm) to see how much fabric you will need.

Don't forget to take into account pieces to be duplicated or cut on a fold. When sewing the garment, pay attention to notches. They must match up with corresponding pieces.

4645 Mini skirt in two layers

Recommendations on fabric: natural or mixed well draping fabric.

You will also need: fusible interfacing, invisible zipper, one button.

CUTTING:

The word, "beam" used on some patterns means "straight of grain". Some pieces will be cut on the fold, this is noted on the pattern piece. Mark all notches and other design features such as darts, pleats etc. from the pattern onto your fabric.

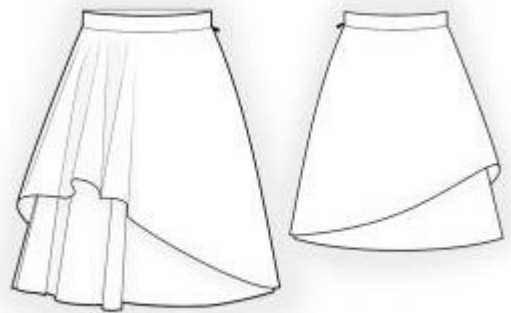
Seam allowances: hem – 1.5 cm, other seams – 1.0 cm.

Main fabric:

1. Inner back - cut 1
2. Inner front - cut 1
3. Outer back - cut 1
4. Outer front - cut 1
5. Waistband - cut 1

Fusible interfacing:

1. Waistband - cut



INSTRUCTIONS:

1. Apply fusible interfacing to waistband.
2. Sew right side seam of outer skirt. Serge and press towards back. Sew right side seam of inner skirt. Serge and press towards back.
3. Serge separately left side edges of inner and outer skirts. Sew left side seam of outer skirt from zipper mark down to hem. Press seam open. Sew left side seam of inner skirt from zipper mark down to hem. Press seam open. Sew zipper in outer skirt. Insert inner skirt into outer skirt, pin on upper edge. Sew seam allowances for zipper of inner skirt to zipper tape.
4. Sew outer side of waistband to upper edge of skirt. Sew ends of waistband, trim corners, turn waistband right side out. Turn edge of inner part of waistband under and topstitch into connecting seam. Press waistband.
5. Serge lower edge of inner skirt. Turn under, press, and topstitch. Serge lower edge of outer skirt. Turn under, press, and topstitch.
6. Mark and make buttonhole on waistband. Sew on a button.

Congratulations, your skirt is ready! :)