

If the pattern has a double line around it, the seam allowances are included.

Note: By default, seam allowances are NOT included (single line) and will need to be added when laying out and cutting details.

Seam Allowance: 1 cm on all seams; hem guidelines are printed on pattern.

Important! Please print all the paper patterns and lay them out at the width of fabric you plan to use (usually from 90 to 150 cm) to see how much fabric you will need.

Don't forget to take into account pieces to be duplicated or cut on a fold. When sewing the garment, pay attention to notches. They must match up with corresponding pieces.

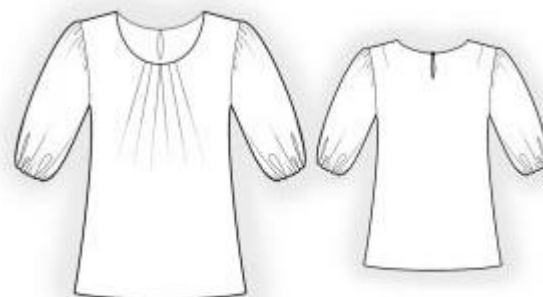
4658 Blouse with pleated neckline.

Recommendations on fabric: natural/mixed silk fabric.

You will also need: 1 button, elastic of 0.5-0.8 cm wide.

CUTTING:

The word, "beam" used on some patterns means "straight of grain". Some pieces will be cut on the fold, this is noted on the pattern piece. Mark all notches and other design features such as darts, pleats etc. from the pattern onto your fabric.



Seam allowances: 1 cm for all seams, 2.0 cm for garment hem and lower edge of sleeve.

Main fabric:

1. Sleeve - cut 2
2. Back – cut 1 on fold
3. Front - cut 1 on fold

INSTRUCTIONS:

1. Sew shoulder darts. Press bulk towards center. Make and fasten pleats on front neckline. Folds are directed towards center.

2. Cut a slit on back as marked. Cut a bias tape 4 cm wide from main fabric. Length is equal to double slit length + 4 cm. Fold bias tape in half lengthwise right side out and

press. Fold outer edges to center and press. Finish the slit with bias tape.

3. Sew shoulder and side seams. Serge and press seams towards back.

4. Cut a bias tape of 3 cm wide and 5 cm long. Fold tape in half lengthwise right sides together and sew at 0.3 cm from fold. Trim seam, turn right side out, adjust loop length.

5. Cut a bias tape 4 cm wide from main fabric. Length is equal to neckline length + 4 cm. Fold bias tape in half lengthwise right side out and press. Pin bias tape to neckline from right side and sew. Clip into seam. Turn bias tape to inside and topstitch along the fold inserting the loop. Press.

6. Sew sleeve seam, serge, and press seam towards back. Make a gathering stitch along sleeve cap and gather fullness. Serge lower edge of sleeve. Turn under and topstitch making a self-carrier. Leave a tiny opening in seam to thread elastic through the self-carrier then sew ends of elastic together. Sew opening closed.

7. Sew sleeves into armholes. Serge and press seams.

8. Serge lower edge of blouse, turn under and topstitch.

9. Sew button on back.

Congratulations, your blouse is ready! :)