

If the pattern has a double line around it, the seam allowances are included.

Note: By default, seam allowances are NOT included (single line) and will need to be added when laying out and cutting details.

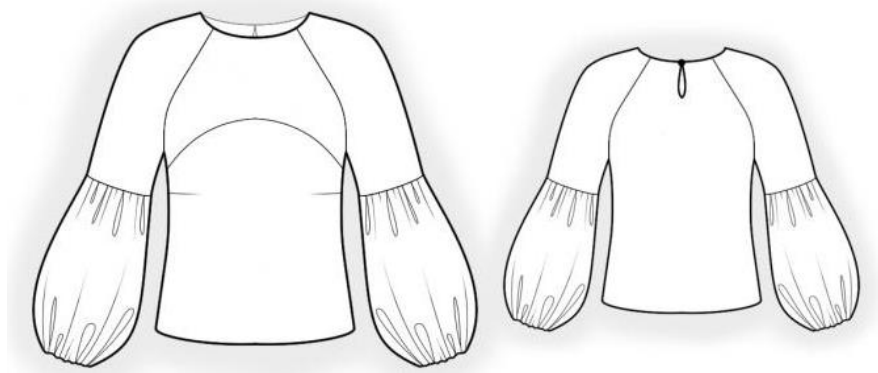
Seam Allowance: 1 cm on all seams; hem guidelines are printed on pattern.

Important! Please print all the paper patterns and lay them out at the width of fabric you plan to use (usually from 90 to 150 cm) to see how much fabric you will need.

Don't forget to take into account pieces to be duplicated or cut on a fold. When sewing the garment, pay attention to notches. They must match up with corresponding pieces.

4661 Blouse with raglan and puff sleeves

Recommendations on fabric:
natural/mixed well draping
fabric suitable for blouses.
You will also need: fusible
interfacing, 1 button, elastic of
0.6 - 0.9 cm wide.



CUTTING:

Main fabric:

1. Front sleeve - cut 2
2. Back sleeve – cut 2
3. Lower sleeve - cut 2
4. Back - cut 2
5. Front neck facing - cut 1
6. Back neck facing - cut 2
7. Upper front - cut 1
8. Lower front - cut 1

Fusible interfacing:

1. Front neck facing - cut 1
2. Back neck facing - cut 2

The word, “beam” used on some patterns means “straight of grain”. Some pieces will be cut on the fold, this is noted on the pattern piece. Mark all notches and other design

features such as darts, pleats etc. from the pattern onto your fabric.

INSTRUCTIONS:

1. Apply fusible interfacing to listed pieces.
2. Serge center back edges separately. Sew center back seam from mark down to hem. Press seam open pressing the slit.
3. Cut a bias tape of 3 cm wide and 5 cm long. Fold tape in half lengthwise right sides together and sew at 0.3 cm from fold. Trim seam, turn right side out, adjust loop length.
4. Sew bust darts. Press bulk upwards. Sew lower front to upper front, serge, and press seam upwards.
5. Sew sleeves into front/back armhole. Serge and press seam towards front/back. Sew upper sleeve seam. Serge and press seam towards back.
6. Make a gathering stitch along sleeve cap and gather fullness. Sew lower sleeve to upper sleeve, serge and press seam upwards.
7. Sew side and sleeve seam with one continuous stitch. Serge and press seams towards back.
8. Sew shoulder seams of neck facings. Serge outer edge. Pin facing to blouse and sew neckline. Turn facing to inside, straighten and press. Sew the loop to the top edge of slit. Tack facing to shoulder seams and to center back seam. Topstitch along folds of back slit.
9. Serge lower edge of sleeve. Turn under at 1 cm, press, and turn again at 2 cm. Topstitch making a self-carrier. Leave a tiny opening in seam to thread elastic through the self-carrier then sew ends of elastic together. Sew opening closed.
10. Serge lower edge of blouse, turn under and topstitch. Sew button on back.

Congratulations, your blouse is ready! :)