

If the pattern has a double line around it, the seam allowances are included.

Note: By default, seam allowances are NOT included (single line) and will need to be added when laying out and cutting details.

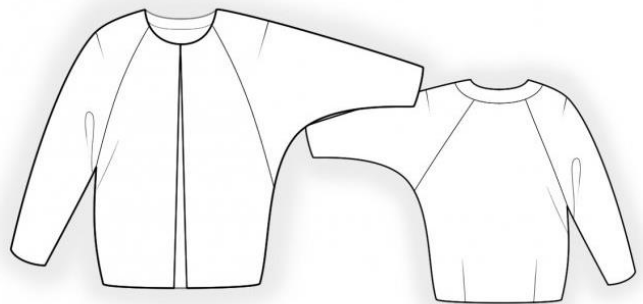
Seam Allowance: 1 cm on all seams; hem guidelines are printed on pattern.

Important! Please print all the paper patterns and lay them out at the width of fabric you plan to use (usually from 90 to 150 cm) to see how much fabric you will need.

Don't forget to take into account pieces to be duplicated or cut on a fold. When sewing the garment, pay attention to notches. They must match up with corresponding pieces.

4673 Loose jacket with raglan sleeves

Recommendations on fabric: light weight, natural/mixed fabric suitable for coats.
You will also need: fusible interfacing, raglan shoulder pads, hook and eyelet.



CUTTING:

The word, "beam" used on some patterns means "straight of grain". Some pieces will be cut on the fold, this is noted on the pattern piece. Mark all notches and other design features such as darts, pleats etc. from the pattern onto your fabric.

Main fabric:

1. Back - cut 2
2. Front - cut 2
3. Front facing - cut 2
4. Back neck facing - cut 2
5. Back hem facing - cut 1
6. Front hem facing - cut 2
7. Back sleeve - cut 2
8. Front sleeve - cut 2

Fusible interfacing:

1. Front facing - cut 2
2. Back neck facing - cut 1
3. Back hem facing - cut 1

4. Front hem facing - cut 2

INSTRUCTIONS:

1. Apply fusible interfacing to listed pieces.
2. Sew darts on backs. Press bulk towards center. Sew darts on sleeves. Press bulk upwards.
3. Sew center back seam. Serge and press seam open.
4. Sew back sleeve to back. Serge and press seam open. Sew front sleeve to front. Serge and press seam open.
5. Sew outer back neck facing to back, press seam towards facing.
6. Sew upper sleeve seam. Serge and press seam open. Sew lower sleeve seam and side seam with one continuous stitch. Serge and press seam towards back.
7. Sew shoulder seams of inner back neck facing and front facings. Press seams open. Serge outer edge.
8. Pin front facings to fronts right sides together and sew along front edge and neckline inserting hook and eyelet. Clip seam on curves, turn front bands right side out, straighten and press. Make a fastening stitch into outer facing connecting seam. Sew shoulder pads.
9. Sew side seams of hem facings. Press seams open. Serge outer edge. Sew hem facing to front facings. Pin facing to jacket right sides together and sew along lower corner and lower edge. Turn facing to inside, straighten and press. Tack facing to side seams and to center back seam.

Congratulations, your jacket is ready! :)