

If the pattern has a double line around it, the seam allowances are included.

Note: By default, seam allowances are NOT included (single line) and will need to be added when laying out and cutting details.

Seam Allowance: 1 cm on all seams; hem guidelines are printed on pattern.

Important! Please print all the paper patterns and lay them out at the width of fabric you plan to use (usually from 90 to 150 cm) to see how much fabric you will need.

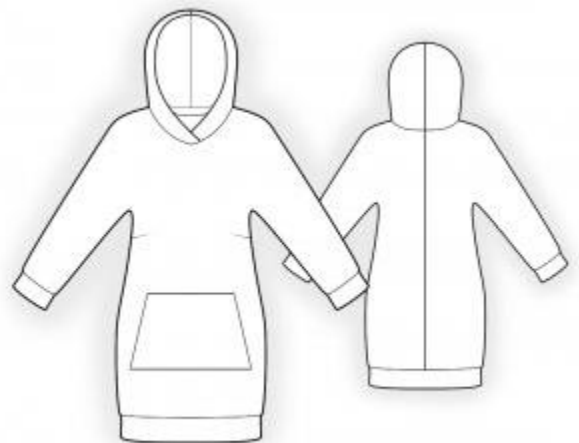
Don't forget to take into account pieces to be duplicated or cut on a fold. When sewing the garment, pay attention to notches. They must match up with corresponding pieces.

4709 Tunica with batwing sleeves and hood

Recommendations on fabric: natural/mixed stable knit fabric with medium stretchiness and heavier weight.

CUTTING:

The word, "beam" used on some patterns means "straight of grain". Some pieces will be cut on the fold, this is noted on the pattern piece. Mark all notches and other design features such as darts, pleats etc. from the pattern onto your fabric.



Seam allowances: all seams 1 cm; seam allowance along side edges of pockets – 2 cm, seam allowance around outer edge of hood – 2 cm.

Main fabric:

1. Back - cut 2
2. Front - cut 1 on fold
3. Hood – cut 2
4. Pocket - cut 1
5. Lower placket – cut 1 on fold
6. Cuff – cut 2
7. Front facing – cut 1
8. Back facing – cut 1

INSTRUCTIONS:

1. Serge pocket around all edges. Turn under seam allowances of side edges and topstitch. Pin pocket onto the right side of front, so that the right side of pocket is on top, matching lower seam line. Topstitch pocket. Fold pocket towards top, fold inside upper seam allowance and topstitch according to the upper seam line.
2. Sew side and shoulder seams, sewing the sleeve edges at the same time. Press seams towards back and serge.
3. Sew shoulder seams of facings. Serge. Sew center edge of hood. Serge. Serge outer edge of hood. Fold seam allowance inside and topstitch. Match and baste together lower edges of hood and of facings. Pin right side of hood onto left part, matching notches. Sew hood and facings with one continuous seam. Serge. Serge seam allowances along neckline. Turn seam allowance under and topstitch.
4. Sew cuff into a ring. Fold cuff in half lengthwise and press. Sew cuff to sleeve, serge.
5. Sew lower placket into ring. Fold placket in half lengthwise and press. Sew placket to lower edge of tunic, serge.

Congratulations, your tunica is ready! :)