

If the pattern has a double line around it, the seam allowances are included.

Note: By default, seam allowances are NOT included (single line) and will need to be added when laying out and cutting details.

Seam Allowance: 1 cm on all seams; hem guidelines are printed on pattern.

Important! Please print all the paper patterns and lay them out at the width of fabric you plan to use (usually from 90 to 150 cm) to see how much fabric you will need.

Don't forget to take into account pieces to be duplicated or cut on a fold. When sewing the garment, pay attention to notches. They must match up with corresponding pieces.

4728 Warm jumpsuit for women

Recommendations on fabric: quilted raincoat fabric with polyester padding.

You will also need: lining, 2 hanks 3 cm wide, 2 hank belt buckles 3 cm wide, elastic tape 3 cm wide, elastic tape 0.7 cm wide, 1 zipper.

CUTTING:

The word, "beam" used on some patterns means "straight of grain". Some pieces will be cut on the fold, this is noted on the pattern piece. Mark all notches and other design features such as darts, pleats etc. from the pattern onto your fabric.

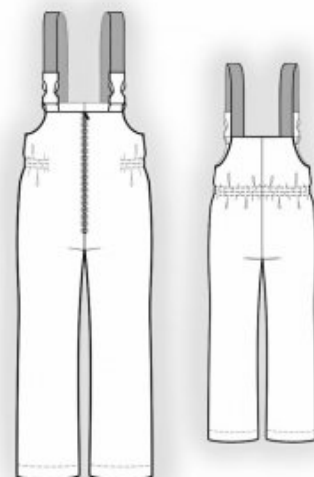
Seam allowances: along hem of pieces from main fabric – 5 cm, along hem of pieces from lining fabric – 3 cm, other seams – 1 cm.

Main fabric:

1. Front half - cut 2
2. Back half - cut 2
3. Decorative Tab - cut 2

Lining:

1. Front half – cut 2
2. Back half – cut 2



3. Fusing for elastic tape – cut 1

INSTRUCTIONS:

1. Pin together the front halves and sew the center seam from notch to leg seam. Clip into seam allowance near notch. Sew in zipper.
2. Pin the back halves together and sew the center edge. Topstitch seam allowances onto left half at 0.1 - 0.2 cm from seam.
3. Sew the side and leg seams. Topstitch side seam allowances onto back half.
4. Topstitch fusing for elastic tape onto garment from the wrong side according to markings. Thread in elastic tape and fix the ends with machine stitch.
5. Fold decorative tab in half lengthwise, right sides together and sew. Turn the decorative tab right side out and straighten it. Thread it through the hank and sew to the upper edge of front half according to markings.
6. Sew the 3 cm elastic tape to the upper edge of back half according to markings. Thread the free end of the elastic tape through the hank buckle, then through the hank, then again through the buckle and fix it.
7. Sew the pieces from lining in the same way as you did for the pieces from main fabric.
8. Pin self to lining right sides together, the straps are turned inside. Fold away the lining at 5 mm from edge of zipper and pin it to the upper edge of the jumpsuit. Fold seam allowances along zipper onto main fabric and pin them to upper edge on top of lining. Sew upper edges. Fold seam allowances along closure onto wrong side. Sew lining to zipper tape. Turn the jumpsuit right side out and straighten it. Sew a decorative stitch at 0.8 cm along the upper edge of jumpsuit and along zipper.
9. Turn jumpsuit right side out. Thread pant legs from lining into pant legs from main fabric. Turn the hem of the fabric inside and press. Fold away seam allowance for them. Match lower edge of lining to the fold line on main fabric from the wrong side. Lining should be placed between the piece and the seam allowance for hem of it. Turn seam allowance for hem on main fabric under by 1.5 cm and topstitch from the wrong side. Total seam allowance for hem on main fabric is 5 cm, 1.5 cm turned under, and 3 cm visible.

Congratulations, your jumpsuit are ready! :)



Model 4728

pattern from pppp.dk