

If the pattern has a double line around it, the seam allowances are included.

Note: By default, seam allowances are NOT included (single line) and will need to be added when laying out and cutting details.

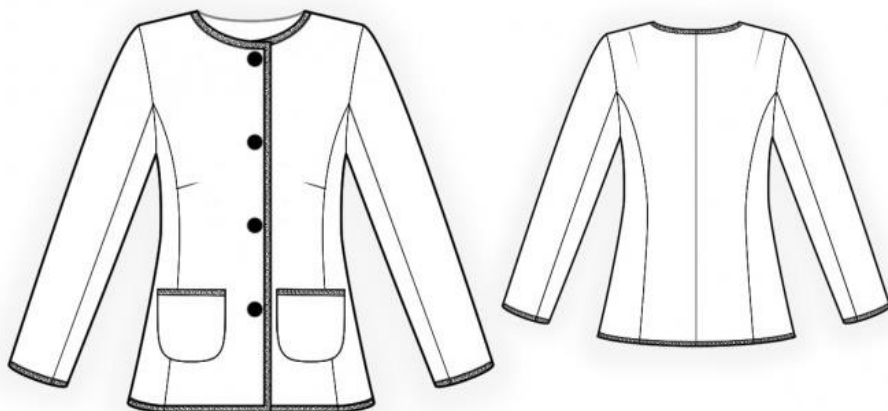
Seam Allowance: 1 cm on all seams; hem guidelines are printed on pattern.

Important! Please print all the paper patterns and lay them out at the width of fabric you plan to use (usually from 90 to 150 cm) to see how much fabric you will need.

Don't forget to take into account pieces to be duplicated or cut on a fold. When sewing the garment, pay attention to notches. They must match up with corresponding pieces.

4731 Chanel style blazer

Recommendations on fabric:
natural/mixed suiting fabrics.
You will also need: fusible
interfacing; lining; thin
shoulder pads; 4 buttons;
decorative tape (approximate
length is given on the sleeve
pattern block).



CUTTING:

The word, “beam” used on some patterns means “straight of grain”. Some pieces will be cut on the fold, this is noted on the pattern piece. Mark all notches and other design features such as darts, pleats etc. from the pattern onto your fabric.

Main fabric:

1. Center back – cut 2
2. Side back – cut 2
3. Side front – cut 2
4. Center front – cut 2
5. Buttonstand (center front facing) – cut 2
6. Back neck facing – cut 1
7. Upper sleeve – cut 2
8. Lower sleeve – cut 2
9. Pocket – cut 2

Lining:

1. Center back – cut 2
2. Side back – cut 2
3. Side front – cut 2
4. Front lining – cut 2
5. Upper sleeve – cut 2
6. Lower sleeve – cut 2

Attention: center back and center front from lining are cut using pattern blocks for self fabric except for the width of back neckline facing and center front facing correspondingly.

Fusible interfacing:

1. Center front – cut 2
2. Buttonstand (center front facing) – cut 2
3. Back neck facing – cut 1

Fusible interfacing is also applied to seam allowances of hem and of sleeve hem.

INSTRUCTIONS:

1. Apply fusible interfacing. Cut a tape from fusible interfacing and apply along edge of back neckline.
2. Sew dart on center back. Sew and press apart princess seams on back. Sew and press apart center back seam.
3. Sew dart on center front. Press dart towards top. Sew and press apart princess seam on front.
4. Serge seam allowances on pocket. Upper press onto wrong side and topstitch. Press side and lower seam allowances onto wrong side. Pin pockets onto fronts according to markings and topstitch.
5. Sew and press apart shoulder and side seams of jacket.
6. Sew side seams of back neckline facing and buttonstands, press seam apart. Pin center front facings onto garment and sew center edges and neckline with one continuous seam. Trim away corners, clip into curves, turn garment right side out, press. Topstitch seam allowance on buttonstand onto buttonstand. Place stitch line at 0,2 cm from seam. Press lower edge of garment.

7. Sew and press apart elbow sleeve seam, adjusting ease on upper part of sleeve and matching notches. Press hem of sleeve. Fold away seam allowance on hem, sew and press apart front sleeve seam.
8. Sew sleeves into armholes matching notches, adjusting ease along upper side of sleeve cap. Sew shoulder pads.
9. Sew seams on lining and sew in sleeves, leaving an opening for turning in left elbow seam. Sew lining to inner edges of center front facings and of facing.
10. Sew lining to lower edge of garment and lower edge of sleeve. Turn jacket right side out. Sew the opening closed.
11. Make buttonholes on right front, sew on buttons on left front.
12. Topstitch decorative tape along neckline, center front, hem of garment and hem of sleeve.

Congratulations, your blazer is ready! :)