

If the pattern has a double line around it, the seam allowances are included.

Note: By default, seam allowances are NOT included (single line) and will need to be added when laying out and cutting details.

Seam Allowance: 1 cm on all seams; hem guidelines are printed on pattern.

Important! Please print all the paper patterns and lay them out at the width of fabric you plan to use (usually from 90 to 150 cm) to see how much fabric you will need.

Don't forget to take into account pieces to be duplicated or cut on a fold. When sewing the garment, pay attention to notches. They must match up with corresponding pieces.

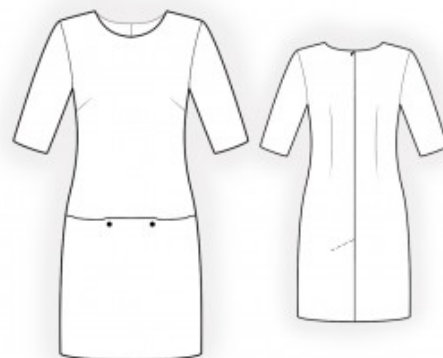
4826 Dress with Pockets and Back Vent

Recommendations on fabric: thin natural/mixed fabric suitable for dresses.

You will also need: dress zipper; two buttons; fusible interfacing.

CUTTING:

The word, "beam" used on some patterns means "straight of grain". Some pieces will be cut on the fold, this is noted on the pattern piece. Mark all notches and other design features such as darts, pleats etc. from the pattern onto your fabric.



Seam allowances: all seams 1 cm. Seam allowance along hem – 3.0 cm, seam allowance of sleeve hem – 2 cm, seam allowance along vent 6 cm.

Main fabric:

1. Back – cut 2
2. Lower front - cut 1 on fold
3. Upper front – cut 1 on fold
4. Back neck facing – cut 2
5. Front neck facing – cut 1
6. Sleeve – cut 2

Lining:

1. Bigger pocket bag – cut 1
2. Smaller pocket bag – cut 1

Fusible interfacing:

1. Back neck facing - cut 2
2. Front neck facing - cut 1

INSTRUCTIONS:

1. Apply interfacing to facings.
2. Sew darts on back and front. Press the bulk of waist darts toward the center, and bust darts toward the top.
3. Serge center back edges separately. Trim away 5 cm on the left center back along the vertical edge of the vent. Apply interfacing to the vent on both sides of the center back from the wrong side. Mark the center seam line (vent fold line) from the right side. Press the left part along the vent fold; on the right side, press only the seam allowance (6 cm) to the wrong side. Align pieces along the center seam and baste together along the upper edge of the vent. Serge seam allowances of the vent. Sew the center back seam from the mark to the vent corner. Clip into the seam allowance at the vent corner on the right part. Press the center seam open, press the seam allowances of the vent, and stitch them together by machine. Sew in the zipper.
4. Pin the larger pocket bag onto the lower front, right sides together, and sew. Topstitch the seam allowance onto the pocket bag at 0.2 cm from the seam. Fold the pocket bag to the wrong side and press the fold. Sew the smaller pocket bag to the upper front. Serge the seam allowance and topstitch it onto the pocket bag. Pin the lower front onto the upper front along the marked line, aligning the lower seam allowances of the pocket bags. Fold the lower part of the dress upward, sew, and serge the lower edge of the pocket bags. Sew a fixing stitch along the upper edge of the lower front, forming the pockets. (See the wiggly lines on the pattern block for lining.)
5. Sew side and shoulder seams. Press toward the back and serge.
6. Sew the shoulder seams of the neckline facings, press the seam open. Serge the outer edge. Pin the facing to the garment, right sides together, and sew the neckline. Fold the facing to the wrong side, straighten, and press. Slipstitch the facing to the garment along the shoulder seams and center back seam.
7. Sew the sleeve seam. Serge and press. Sew the sleeve into the armhole, matching notches. Serge and press.
8. Serge the lower edge of the dress and sleeves. Press to the wrong side and topstitch.
9. Sew decorative buttons onto the pockets.
Congratulations, your dress is ready! :)