

If the pattern has a double line around it, the seam allowances are included.

**Note:** By default, seam allowances are NOT included (single line) and will need to be added when laying out and cutting details.

Seam Allowance: 1 cm on all seams; hem guidelines are printed on pattern.

**Important!** Please print all the paper patterns and lay them out at the width of fabric you plan to use (usually from 90 to 150 cm) to see how much fabric you will need.

Don't forget to take into account pieces to be duplicated or cut on a fold. When sewing the garment, pay attention to notches. They must match up with corresponding pieces.

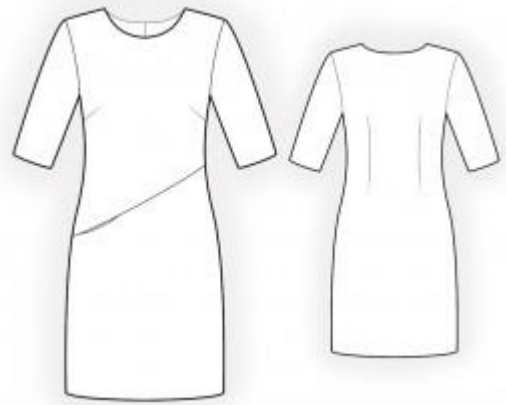
## 4831 Dress with pocket and diagonal seam in front

Recommendations on fabric: natural/mixed knit fabric of small stretchiness.

You will also need: lining, knit fusible interfacing.

### CUTTING:

The word, "beam" used on some patterns means "straight of grain". Some pieces will be cut on the fold, this is noted on the pattern piece. Mark all notches and other design features such as darts, pleats etc. from the pattern onto your fabric.



Seam allowances: all seams 1 cm, for hem of garment and hem of sleeve – 3 cm.

### Main fabric:

1. Back – cut 1 on fold
2. Upper front – cut 1
3. Lower front – cut 1
4. Front neck facing – cut 1
5. Back neck facing – cut 1
6. Sleeve – cut 2

### Lining:

1. Pocket lining – cut 2

## INSTRUCTIONS:

1. Apply fusible interfacing.
2. Sew darts on front and on back. Trim bulk with serger and press on front towards top, on back towards center.
3. Sew pocket lining to upper front and to lower front. Serge. Sew upper front to lower front, right sides together, sewing the pocket lining at the same time. Serge and press apart.
4. Sew shoulder and side seams. Serge seams and press towards back.
5. Sew sleeve seam. Serge and press. Sew in sleeves, serge, and press.
6. Sew shoulder seam of neckline facings. Press seam apart. Serge outer edge facings. Pin facings at neckline and sew. Turn facings under, clipping into seam allowances. Slip stitch facing to shoulder seams.
7. Serge seam allowances along hem of dress and hem of sleeves, turn inside and topstitch.

Congratulations, your dress is ready! :)