

If the pattern has a double line around it, the seam allowances are included.

Note: By default, seam allowances are NOT included (single line) and will need to be added when laying out and cutting details.

Seam Allowance: 1 cm on all seams; hem guidelines are printed on pattern.

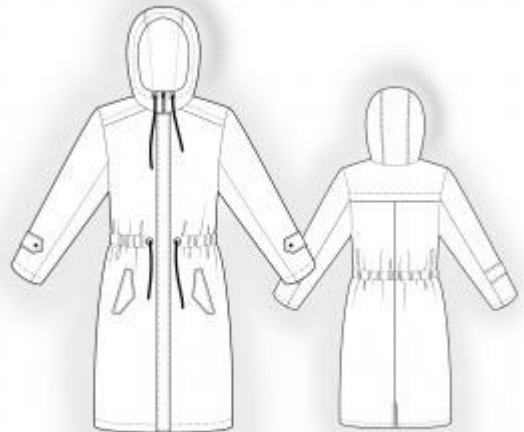
Important! Please print all the paper patterns and lay them out at the width of fabric you plan to use (usually from 90 to 150 cm) to see how much fabric you will need.

Don't forget to take into account pieces to be duplicated or cut on a fold. When sewing the garment, pay attention to notches. They must match up with corresponding pieces.

4871 Parka with hood

Recommendations on fabric: Natural/mixed fabrics suitable for raincoats approx. 2.4 m (size 32-42), approx. 2.9 m (size 44-54) with a fabric width of 150 cm.

Lining approx. 2 m (size 32-42), approx. 2.5 m (size 44-54) with a fabric width of 150 cm. You will also need: fusible interfacing, separating zipper, 4 grommets, decorative cord, 2 buttons, 4 eyelets and 4 cord ends.



CUTTING:

The word, "beam" used on some patterns means "straight of grain". Some pieces will be cut on the fold, this is noted on the pattern piece. Mark all notches and other design features such as darts, pleats etc. from the pattern onto your fabric.

Seam allowances: all seams 1 cm. Seam allowance for hem of garment - 4.0 cm. Seam allowance for hem of sleeve – 3 cm.

Main fabric:

1. Back – cut 2
2. Front – cut 2
3. Upper sleeve – cut 2
4. Lower sleeve – cut 2

5. Center front facing – cut 2
6. Back yoke – cut 1
7. Front yoke – cut 2
8. Back neck facing – cut 1
9. Flap – cut 4
10. Underlay piece – cut 2
11. Casing – cut 1
12. Center hood – cut 1
13. Side hood – cut 2
14. Hood facing – cut 1
15. Front placket – cut 1
16. Decorative Tab – cut 2

Lining:

1. Large pocket bag – cut 2
2. Small pocket bag – cut 2
3. Front lining – cut 2
4. Back lining – cut 2
5. Upper sleeve – cut 2
6. Lower sleeve – cut 2
7. Center hood – cut 1
8. Side hood – cut 2

Fusible interfacing:

1. Center front facing – cut 2
2. Back neck facing – cut 1
3. Flap – cut 2
4. Front placket – cut 1
5. Decorative Tab – cut 2
6. Hood facing – cut 1

Also apply fusible interfacing to armholes on back and front, pocket entrance, hem of garment and hem of sleeve.

INSTRUCTIONS:

1. Apply fusible interfacing.
2. Sew the center back seam up to the notch for the slit and press the seam open. Sew the yoke to the back, make the pleat, and stitch it in place from the right side of the back yoke. Sew the yoke to the front in the same way.

3. Pin the flaps together, right sides facing, and sew along the sides and lower edges. Trim the corners, turn the flaps right side out, and press. Sew a decorative stitch 0.5 cm from the edge. Topstitch the underlay piece onto the larger pocket bag, folding the long edge under. Topstitch the flap onto the underlay piece and pocket bag. Sew the flap to the front along the upper line of the pocket marking. Sew the smaller pocket bag to the front along the lower pocket marking, stopping near the short marking lines. Slash through the pocket opening, snipping diagonally toward the ends of the stitching, about 1-1.5 cm from the end of the pocket opening. Turn the pocket bags to the wrong side through the opening. Sew double backstitch lines near the corners to secure the ends of the pockets. Sew and serge the edges of the pocket bags and fold the flap downward.

4. Sew the side and shoulder seams and press the seam open. Press the seam allowances of the casings to the wrong side, pin them onto the shell according to the markings, and topstitch along the two longer edges, 0.1 cm from the fold. Install the grommets according to the markings.

5. Fold the tab in half lengthwise, right sides together, and sew the long side and corner. Trim the seam allowances, turn the tab right side out, and press. Sew a decorative stitch 0.5 cm from the edge. Pin the tab onto the upper sleeve and baste it along the elbow edge. Sew the elbow seam of the sleeve and press it open. Press the hem of the sleeve. Sew and press open the front sleeve seam, then sew the sleeve into the armhole.

6. Sew the center part to the hood, press the seam allowances towards the center part, and sew a decorative stitch 0.5 cm from the seam. Install the grommets on the hood and sew the hood into the neckline.

7. Sew the shoulder seam of the back neckline facing to the center front facing and press the seam open. Sew the seams on the hood lining and press the seam allowances towards the central part. Sew the hood lining to the facing, pressing the seam allowances towards the facing. Attach the hood lining to the neckline of the facings.

8. Pin the main fabric to the center front facings, right sides together, inserting the zipper between the pieces, and sew the center front edge and outer edge of the hood. Fold the center front facings to the wrong side and baste the seam allowances of the hood seam together. Sew a decorative stitch along the hood as marked to create a casing.

9. Assemble the lining, leaving an opening in the left side seam. Attach the sleeves. Sew the lining to the center front facings, facings, and hem of the jacket, sewing the back slit at the same time. Attach the lining to the sleeve hems. Turn the jacket right side out through the opening, then sew the opening closed. Sew a reinforcing stitch along the back slit, 0.2 cm

from the edge.

10. Sew decorative stitches along the hem of the garment and the hem of the sleeves, 2 cm from the edge.

11. Fold the front placket in half lengthwise and sew the short sides. Turn the placket right side out and press. Sew a decorative stitch 0.5 cm from the shorter and outer edges. Pin the placket to the front according to the notch, with the outer edge directed towards the side seam. Topstitch the placket to the front, fold it towards the center edge, and topstitch 1 cm from the edge.

12. Thread the cords through the casings and grommets. Attach eyelets and cord ends to the cords.

13. Sew buttons onto the sleeves to secure the tabs in place.

Congratulations, your parka is ready! :)