

If the pattern has a double line around it, the seam allowances are included.

**Note:** By default, seam allowances are NOT included (single line) and will need to be added when laying out and cutting details.

Seam Allowance: 1 cm on all seams; hem guidelines are printed on pattern.

**Important!** Please print all the paper patterns and lay them out at the width of fabric you plan to use (usually from 90 to 150 cm) to see how much fabric you will need.

Don't forget to take into account pieces to be duplicated or cut on a fold. When sewing the garment, pay attention to notches. They must match up with corresponding pieces.

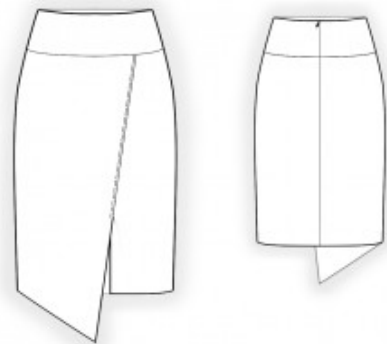
## 4927 Asymmetric Skirt with Yoke

Recommendations on fabric: natural/mixed fabrics of dense texture.

You will also need: fusible interfacing; 1 dress zipper.

### CUTTING:

The word, “beam” used on some patterns means “straight of grain”. Some pieces will be cut on the fold, this is noted on the pattern piece. Mark all notches and other design features such as darts, pleats etc. from the pattern onto your fabric.



Seam allowances: all seams 1 cm. Seam allowance along the slit – 3 cm. Seam allowance for hem of garment – 3 cm.

### Main fabric:

1. Back – cut 2
2. Back yoke – cut 4
3. Right front skirt – cut 1
4. Left front skirt – cut 1
5. Front yoke – cut 2

### Fusible interfacing:

1. Back yoke – cut 2
2. Front yoke – cut 1

#### INSTRUCTIONS:

1. Apply fusible interfacing to the inner yokes.
2. Sew darts on the back; press the bulk toward the center. Sew the back yoke to the back skirt; press upward and serge. Serge the center edges of the back skirt separately. Sew the center seam from the notch for the zipper to the hem. Press the seam allowances open. Sew in the zipper.
3. Serge the edge of the princess seam on the left front from the notch downward. Fold the seam allowance inside at 1 cm and topstitch. Sew the princess seam from the top to the notch. Serge from top to bottom. Press the seam allowance on the right front skirt and topstitch from the top to the notch at 0.5–1.0 cm from the seam. Finish the seam allowance from the notch to the bottom with hidden stitches.
4. Sew the front yoke to the front skirt; press upward and serge.
5. Sew the side seams; press toward the back and serge.
6. Sew the side seams of the inside yokes (hereafter referred to as facings); press the seams open. Serge the lower edge. Pin the facing to the skirt, right sides together, and sew the upper edge. Topstitch the seam allowances onto the facing at 0.2 cm from the seam. Turn the facing to the inside and press. Fold in the center edges of the facings and sew them to the zipper tape. Stitch-in-the-ditch the facing into the seam of the outer yoke.
7. Serge the lower edge of the skirt; press to the wrong side and finish with hidden stitches.

Congratulations, your skirt is ready! :)