

If the pattern has a double line around it, the seam allowances are included.

Note: By default, seam allowances are NOT included (single line) and will need to be added when laying out and cutting details.

Seam Allowance: 1 cm on all seams; hem guidelines are printed on pattern.

Important! Please print all the paper patterns and lay them out at the width of fabric you plan to use (usually from 90 to 150 cm) to see how much fabric you will need.

Don't forget to take into account pieces to be duplicated or cut on a fold. When sewing the garment, pay attention to notches. They must match up with corresponding pieces.

4931 Kimono sleeve blouse with ruffle

Recommendations on fabric: natural/mixed fabrics suitable for blouses.

You will also need: fusible interfacing, 1 button.

CUTTING:

The word, "beam" used on some patterns means "straight of grain". Some pieces will be cut on the fold, this is noted on the pattern piece. Mark all notches and other design features such as darts, pleats etc. from the pattern onto your fabric.

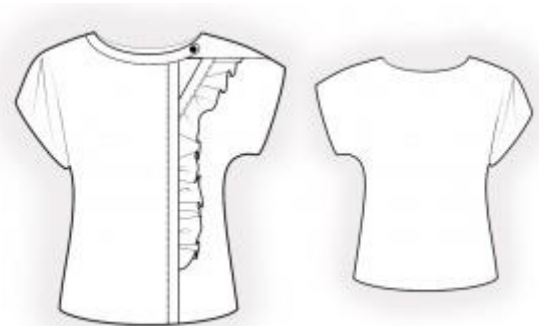
Seam allowances: Seam allowance along hem of garment – 1.5 cm, seam allowance on lower edge of sleeve – 2 cm, outer seam allowance of ruffle – 0 cm, other seams – 1.0 cm.

Main fabric:

1. Right front – cut 1
2. Left front – cut 1
3. Back – cut 1
4. Ruffle – cut 1
5. Front neck facing – cut 2
6. Back neck facing – cut 1
7. Front placket – cut 1

Fusible interfacing:

1. Front neck facing – cut 2



2. Back neck facing – cut 1
3. Front placket – cut 1

* If your fabric has a clear wrong side, you will need to cut off the one-piece placket from the pattern of the left front piece (cut on slanted line marked with wavy line). Cut left front and placket out of the fabric as a to separate pieces, with seam allowances in edges that was marked with wavy line – 1 cm. Cut the placket along the grain of the fabric.*

INSTRUCTIONS:

1. Apply fusible interfacing. Also apply fusible interfacing to one-piece placket on left front.
2. Fold one piece placket on left front onto right side along the marked line and press.
3. Finish outer edge of ruffle with thin rolled hem. Sew a gathering stitch along inner edge and gather fullness or make and baste pleats as desired. Baste ruffle to center edge of left front and slanted line marked with wavy line. Fold one-piece placket of left front onto right side along the marked line, fold seam allowance inside and topstitch at 0.2 cm from the edge. * If your fabric has a clear wrong side, sew placket with the right side onto wrong side the slanted edge of the left front, fold it upwards, and press the seam allowance onto the placket. Then sew in the same way as for the one-piece placket. *
4. Pin right side of front placket onto wrong side of right front, inserting left front in between (right side towards placket). Fold away left front and placket, press seam allowance onto right part. Fold placket onto right front, turn under the seam allowance of placket and press. Topstitch placket onto front at 0.2 cm from the edge.
5. Pin front neckline facings right sides together and sew along upper edge and rounded area up to mark. Trim seam allowances, clip into curves. Turn facing right side out and press. Make a buttonhole. Sew outer facing to front neckline, turn under seam allowance of inner facing and stitch in the ditch.
6. Serge outer edge of back neckline facing. Pin facing onto back, right side down, and sew neckline and inner part from closure to mark. Start and stop stitching exactly at the marked seamline. Trim seam allowances, clip into curves. Fold facing onto wrong side and press.
7. Sew shoulder seams, placing them between inner and outer facing. Left front is placed on the left between facings. Press seams towards back, serge. Turn pieces right side out.

8. Sew side seams, press seams towards back and serge.
9. Serge lower edge of garment and lower edge of sleeve, press onto wrong side and topstitch.
10. Sew on button.

Congratulations, your blouse is ready! :)