

If the pattern has a double line around it, the seam allowances are included.

Note: By default, seam allowances are NOT included (single line) and will need to be added when laying out and cutting details.

Seam Allowance: 1 cm on all seams; hem guidelines are printed on pattern.

Important! Please print all the paper patterns and lay them out at the width of fabric you plan to use (usually from 90 to 150 cm) to see how much fabric you will need.

Don't forget to take into account pieces to be duplicated or cut on a fold. When sewing the garment, pay attention to notches. They must match up with corresponding pieces.

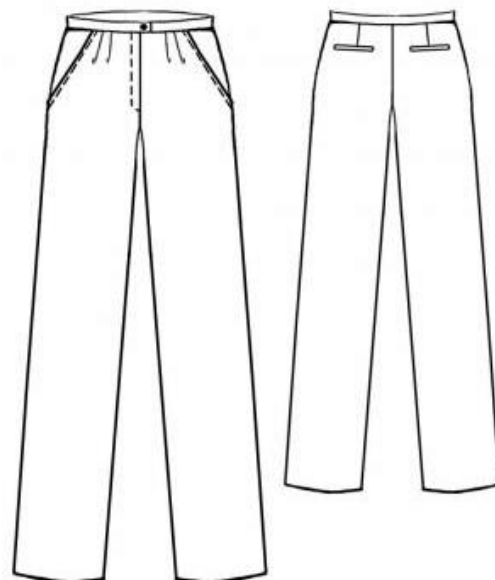
5004 Trousers with slanted pockets and tucks.

Recommendations on fabric: gabardine, bottom-weight fabric.

You will also need: 1 zipper; 1 button, fusible interfacing.

CUTTING:

The word, "beam" used on some patterns means "straight of grain". Some pieces will be cut on the fold, this is noted on the pattern piece. Mark all notches and other design features such as darts, pleats etc. from the pattern onto your fabric.



Seam Allowance: hem 2 cm; all other seams 1 cm.

Main fabric:

1. Front – cut 2
2. Back – cut 2
3. Front side – cut 2
4. Waistband (belt) – cut 1
5. Front pocket sacking – cut 2
7. Back pocket welt - cut 2
8. Back pocket sacking - cut 2#

INSTRUCTIONS:

1. Make pleats on front and baste.
2. Sew pocket sackings to the front pocket edge. Turn onto the wrong side and press. Pin side fronts to front matching marks. Sew the pocket sacking to side front on the inside of garment. Baste pocket to side and waist edges.
3. Sew back darts, press toward center. Construct single welt pockets according to marks on pant backs. Here is a great tutorial on the single welt pocket. Sew side seams, serge and press toward back. Sew back the center seam.
4. Sew the front seam below the notch mark. Press zipper-slit self-facings onto the wrong side along fold lines. Sew in zipper under the zipper allowance, placing teeth close to the fold. Pin slit sides together. Pin zipper free side to other side of slit. Do not catch the front part. Topstitch this front part on 2.5 cm distance, catching the facing.
5. Sew waistband to pant upper edges, closure allowance should extend over the slit allowance edge. Fold the waistband along the center, right sides together, then sew short ends and closure allowance. Turn waistband inner seam allowance under and sew to joining seams. Topstitch the waist along the edges.
6. Sew trouser leg hems.
7. Make buttonholes on the right and sew the button on left.

Congratulations, your trousers are ready! :)