

If the pattern has a double line around it, the seam allowances are included.

Note: By default, seam allowances are NOT included (single line) and will need to be added when laying out and cutting details.

Seam Allowance: 1 cm on all seams; hem guidelines are printed on pattern.

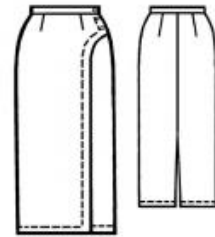
Important! Please print all the paper patterns and lay them out at the width of fabric you plan to use (usually from 90 to 150 cm) to see how much fabric you will need.

Don't forget to take into account pieces to be duplicated or cut on a fold. When sewing the garment, pay attention to notches. They must match up with corresponding pieces.

5024 Straight skirt with decorative wrap

Recommendations on fabric: soft wool or rich silk, silk crepe.

You will also need: 1 zipper; 3 buttons; fusible interfacing
If the pattern has a double line around it, the seam allowances are included.



CUTTING:

The word, “beam” used on some patterns means “straight of grain”. Some pieces will be cut on the fold, this is noted on the pattern piece. Mark all notches and other design features such as darts, pleats etc. from the pattern onto your fabric.

Seam allowances: all seams 1 cm.

Main fabric:

1. Back panel – cut 2
2. Front panel – cut 2
3. Waistband – cut 1
4. Facing – cut 2

Fusible interfacing: apply the interfacing to wrong side of waistband and facings.

INSTRUCTIONS:

1. Sew the front and back darts and press them toward the center.
2. Serge the center back edges separately. Sew the center back seam from the zipper mark to the slit mark. Insert the zipper.
3. Press the slit seam allowances to the wrong side and topstitch.
4. Finish the front panels with the facing. Press the seam allowances open, serge the facing edge, and press the facing to the wrong side. Topstitch 2 cm from the edge.
5. Sew the side seams, serge, and press them toward the back. Topstitch if desired.
6. Sew the waistband to the upper edge of the garment, right sides together. Press the seam allowances toward the waistband. Fold the waistband in half lengthwise and sew the ends. Clip the corners and turn the waistband right side out. Turn the seam allowance of the inner waistband edge under and baste or pin it so that it extends 2 mm beyond the joining seam. Topstitch the inner edge along the joining seam from the right side. Make a buttonhole on the left end of the waistband and sew the button on the right end.
7. Serge the lower edge of the garment, turn it to the wrong side, and topstitch. Sew decorative buttons below the waistband button.

Congratulations – your skirt are finished! :)