

If the pattern has a double line around it, the seam allowances are included.

Note: By default, seam allowances are NOT included (single line) and will need to be added when laying out and cutting details.

Seam Allowance: 1 cm on all seams; hem guidelines are printed on pattern.

Important! Please print all the paper patterns and lay them out at the width of fabric you plan to use (usually from 90 to 150 cm) to see how much fabric you will need.

Don't forget to take into account pieces to be duplicated or cut on a fold. When sewing the garment, pay attention to notches. They must match up with corresponding pieces.

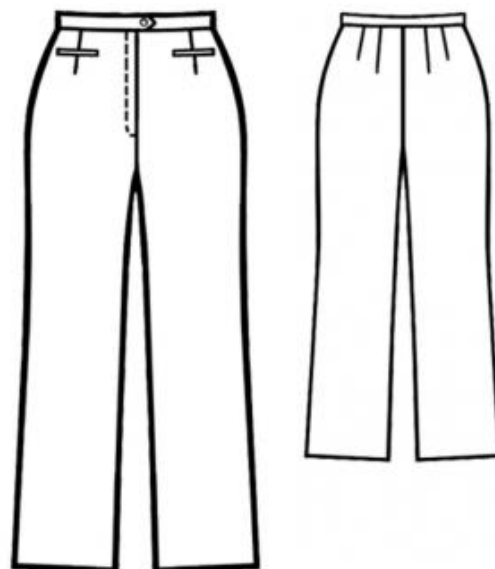
5037 Trousers with piped front pockets

Recommendations on fabric: wool/wool blend.

You will also need: fusible interfacing; zipper (length depends on your size); 1 button.

CUTTING:

The word, "beam" used on some patterns means "straight of grain". Some pieces will be cut on the fold, this is noted on the pattern piece. Mark all notches and other design features such as darts, pleats etc. from the pattern onto your fabric.



Seam allowances: all seams 1 cm. Hem – 2 cm

Main fabric:

1. Front – cut 2
2. Back – cut 2
3. Waistband – cut 1

Additionally: 4 pocket bias bindings of 11 cm length and 2 cm width including allowances; 4 pocket sackings of 11 cm width and 10 cm lengths including allowances.

Interfacing:

1. Waistband – cut 1

INSTRUCTIONS:

1. Apply interfacing to the waistband. Sew the darts and press them toward the center.
2. Make the welt pockets: apply a 4 cm wide strip of fusible interfacing to the wrong side above the pocket marking. Place the binding on the front piece, right sides together, align it with the pocket entrance marking, and stitch along the marking, matching the lengthwise edges with the pocket entrance line. Cut the front piece between the stitching lines, clipping diagonally into the corners. Be careful not to cut the facings and pocket bags. Press the seam allowances toward the garment. Turn the facings to the wrong side to form neat frames and tack in place. Topstitch on the right side along the seam joining the facing. Turn the small triangles at the ends to the wrong side and stitch them to the facing between the ends of the stitching lines. Sew the free ends of the pocket bags to the free edges of the facing seam allowances on the wrong side. Press the pocket bags downward, align them, and stitch them together.
3. Sew the side seams and inseams. Finish the seam allowances and press them open. Place one pant leg inside the other, right sides together. Sew the crotch seam from the mark and continue sewing the center back seam in one continuous seam.
4. Zipper: press the one-piece facings to the wrong side: on the right edge along the center front line, and on the left edge 1 cm from the center front line (closure allowance). Sew the zipper under the closure allowance edge (left edge), close to the fold, with the zipper teeth next to the fold. Pin the fly, matching the center front lines. Sew the free zipper tape to the one-piece facing on the right closure edge. Do not catch the fabric of the right front piece. Topstitch the right front along the closure according to the markings, catching the facing.
5. Sew the waistband to the upper edge of the garment, leaving the ends extended: 2 cm on the left side (under the closure) and 5 cm on the right side (over the closure). Fold the waistband in half lengthwise, right sides together, and stitch the ends. Trim close to the stitching. Turn the waistband right side out. Fold the seam allowance of the inner waistband under and sew it by hand. Make a buttonhole on the right end and sew the button on the left end.
6. Serge the bottom edges of the pant legs, press them to the wrong side, and hem by hand.

Congratulations – your trousers are finished! :)