

If the pattern has a double line around it, the seam allowances are included.

Note: By default, seam allowances are NOT included (single line) and will need to be added when laying out and cutting details.

Seam Allowance: 1 cm on all seams; hem guidelines are printed on pattern.

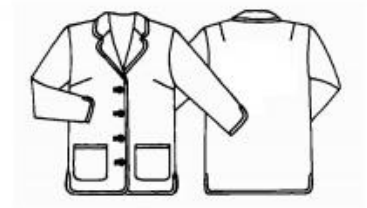
Important! Please print all the paper patterns and lay them out at the width of fabric you plan to use (usually from 90 to 150 cm) to see how much fabric you will need.

Don't forget to take into account pieces to be duplicated or cut on a fold. When sewing the garment, pay attention to notches. They must match up with corresponding pieces.

5051 Folklore-inspired jacket

Recommendations on fabric: thick wool fabric or fabric suitable for coats of 150 cm width.

You will also need: knitwear braid for trimming (can be of contrast colour); lining; fusing; 4 buttons.



CUTTING:

The word, “beam” used on some patterns means “straight of grain”. Some pieces will be cut on the fold, this is noted on the pattern piece. Mark all notches and other design features such as darts, pleats etc. from the pattern onto your fabric.

Seam allowances: all seams 1 cm.

Main fabric:

1. Front part – 2 details
2. Back part – 1 folded detail
3. Collar – 2 details
4. Upper sleeve – 2 details
5. Lower sleeve – 2 details
6. Front band – 2 details
7. Pocket – 2 details

Lining:

1. Front part – 2 details
2. Back part – 1 folded detail
3. Upper sleeve – 2 details
4. Lower sleeve – 2 details
5. Pocket – 2 details

Fusing:

1. Collar – 1 detail
2. Front band – 2 details
3. Pocket – 2 details

INSTRUCTIONS:

1. Make 4 button loops on the right outer front piece. Make 1 button loop on the right inner front piece. Cut 10 strips, 5 cm long each, from trimming braid, then press them lengthwise in half. Stitch two facings on the right side, 0.75 cm from the notch mark along the upper and lower lines, so that the facing open edges meet exactly at the loop center. Cut the front piece between the stitching lines, stopping before the ends. Clip diagonally at the ends of the stitching lines, without damaging the facings. Form an even rectangular frame from the facings and press. Turn the facing ends and small triangles to the wrong side. Tack the facing folds together. Topstitch the small triangles to the facings on the wrong side.
2. Stitch the darts. Stitch the shoulder seams on the outer and inner pieces.
3. Stitch the sleeve hem facings to the lining sleeves. Set the fabric sleeves into the armholes and set the lining sleeves into the inner armholes. Stitch the sleeve seams and side seams in one continuous seam, leaving openings at the sides for vents.
4. Stitch one collar piece to the neckline of the outer jacket (up to the mark). Stitch the other collar piece to the neckline of the inner jacket (clip the seam allowance at the front neckline corner). Press the collar joining seam allowances open.
5. Slash the one-piece seam allowances at the pocket openings according to the markings. Trim the pocket upper edge with braid. Press the remaining pocket seam allowances to the wrong side. Pin the pockets to the front pieces and topstitch along the edges.
6. Sew in the shoulder pads.
7. Place the lining and garment wrong sides together. Sew the lining above the armholes to the shoulder pads, and sew the lining below the armholes to the side seam allowances.
8. Stitch the facings, collar, garment hem, and sleeve hems 0.5 cm above the marked lines.
9. Trim the seam allowances along the marked lines. Bind the edges with braid. Tack

both fabric layers around the loops. Cut the fabric under the loops (except the loop on the lapel) along the center of each loop, diagonally to the ends of the facing seams. Turn the slit edges to the wrong side and sew them to the facings.

10. Sew the buttons on the left front piece. Sew one button on the right lapel loop.

Congratulations – your jacket are finished! :)