

If the pattern has a double line around it, the seam allowances are included.

Note: By default, seam allowances are NOT included (single line) and will need to be added when laying out and cutting details.

Seam Allowance: 1 cm on all seams; hem guidelines are printed on pattern.

Important! Please print all the paper patterns and lay them out at the width of fabric you plan to use (usually from 90 to 150 cm) to see how much fabric you will need.

Don't forget to take into account pieces to be duplicated or cut on a fold. When sewing the garment, pay attention to notches. They must match up with corresponding pieces.

5055 Classic Women's Trousers with Elastic Waistband

Recommendations on fabric: wool/semi-wool.

You will also need: zipper (length depends on your size); 1 button.

CUTTING:

The word, "beam" used on some patterns means "straight of grain". Some pieces will be cut on the fold, this is noted on the pattern piece. Mark all notches and other design features such as darts, pleats etc. from the pattern onto your fabric.

Seam allowances: all seams 1 cm.

Main fabric:

1. Front part – 2 details
2. Back part – 2 details
3. Front sacking – 2 details
4. Back pocket – 2 details
5. Waistband – 1 detail

Additionally: 4 facings of 20 cm length and 3.5 cm width for pocket entrances.

Fusing:

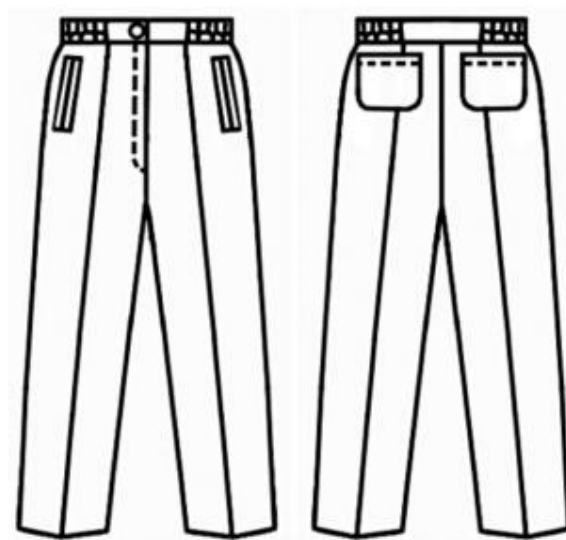
1. Waistband – 1 piece

Lining:

1. Front sacking – 2 pieces

INSTRUCTIONS:

1. Stitch darts; press pleats toward the front/back pieces.



2. Press reinforcement strips to the wrong side of the pocket openings. Make slit pockets in the front pieces: press facings along the center and topstitch them along the joining lines, 0.5 cm from the slits. Cut the pieces between the stitches (stop before the ends), clipping the stitch ends diagonally. Be careful not to cut the facings or pocket bags. Turn the facings to the wrong side and around the edges to form neat frames. Turn the small triangles at the slit ends to the wrong side, then topstitch on the facings between the stitch ends. Stitch the lining pocket bag to the front facings' seam allowance and the fabric pocket bag to the side facings' seam allowance. Stitch the pocket bags together, then tack them to the upper and side edges of the front pieces.

3. Stitch the center front seam below the slit mark. Stitch the center back seam.

4. Press the right one-piece closure facing and the left slit edge to the wrong side. Tack the zipper tape to the left slit edge with the teeth close to the fold. Fold the slit allowance along the center and neatly finish one short edge (closure allowance). Neaten the open lengthwise edges together. Tack the slit allowance under the left slit edge so that it extends 3 cm. Topstitch the left closure edge along the edge, catching the zipper tape and slit allowance. Pin the slit edges together. Stitch the free zipper tape to the right facing, without catching the garment fabric. Topstitch the right piece along the markings, catching the facing and slit allowance at the lower part.

5. Stitch the side seams and inseams.

6. Stitch the back seam. Stitch one long edge of the waistband to the upper edge of the garment, right sides together; stitch the closure allowance to the upper part of the slit allowance. Fold the waistband in half lengthwise and stitch the short edges. Press one half of the waistband to the wrong side, fold the lower edge under, and pin it to the joining seam. For the casing, topstitch the waistband along both sides of the joining seam between the darts. Cut the elastic into two pieces; insert them into the casing and stitch them to the waistband, continuing each dart line. The distance between the darts must now be 19.5 / 20.5 / 21.5 / 23 / 24.5 / 26 cm. Stitch the remaining open lower edge along the joining seam. Topstitch the waistband along the centers of the casings between the crosswise stitches, stretching the elastic. Make a buttonhole 1 cm from the short edge of the waistband.

7. Press the one-piece facings of the pocket upper edges to the wrong side, fold under, and topstitch at a distance of 1.5 cm. Pin the pockets to the back pieces and topstitch along the edges.

8. Sew the hems.

Congratulations – your trousers are finished! :)