

If the pattern has a double line around it, the seam allowances are included.

Note: By default, seam allowances are NOT included (single line) and will need to be added when laying out and cutting details.

Seam Allowance: 1 cm on all seams; hem guidelines are printed on pattern.

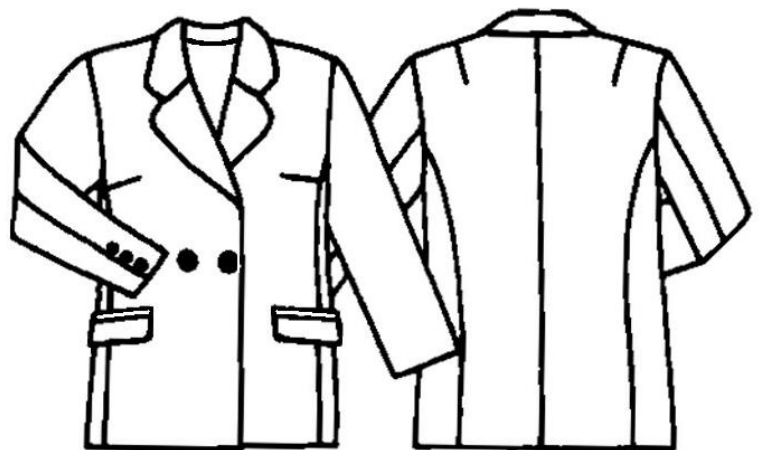
Important! Please print all the paper patterns and lay them out at the width of fabric you plan to use (usually from 90 to 150 cm) to see how much fabric you will need.

Don't forget to take into account pieces to be duplicated or cut on a fold. When sewing the garment, pay attention to notches. They must match up with corresponding pieces.

5062 Wool blazer

Recommendations on fabric:
wool/fabric suitable for coats

You will also need: lining; fusible interfacing; 2 large buttons; 6 small buttons



CUTTING:

The word, "beam" used on some patterns means "straight of grain". Some pieces will be cut on the fold, this is noted on the pattern piece. Mark all notches and other design features such as darts, pleats etc. from the pattern onto your fabric.

Main fabric:

1. Front part – 2 pieces
2. Side part – 2 pieces
3. Back part – 2 pieces
4. Collar – 2 pieces
5. Upper sleeve – 2 pieces
6. Lower sleeve – 2 pieces
7. Front band – 2 pieces

8. Flap – 4 pieces
9. Pocket facing – 4 pieces

Lining:

1. Front part – 2 pieces
2. Side part – 2 pieces
3. Back part – 2 pieces
4. Upper sleeve – 2 pieces
5. Lower sleeve – 2 pieces
6. Sacking – 4 pieces

Fusible interfacing:

1. Front band – 2 pieces
2. Front part – 2 pieces
3. Collar – 1 piece
4. Flap – 2 pieces
5. Pocket facing – 4 pieces

INSTRUCTIONS:

1. Apply the fusible interfacing to wrong side of side pocket entrance, front/side part's armholes.
2. Stitch front upper darts, stitch relieve seams.
3. Cut slit pockets with two facings and flaps into front part: lay facings right sides together and topstitch them along joining lines. Cut front part between stitches (stop before ends), diagonally at stitch ends. Do not cut through facing! Press seam allowances apart. Turn facings to wrong side through slit to make a neat frame. Topstitch facing on wrong side along joining seams. Turn small triangle at slit ends into wrong side and stitch on facings between upper stitch ends and lower stitch ends. Lay one soft and one reinforced flap right side together and overstitch neatly along outer sides. Turn the flap right sides out, press edges. Set the flap into the pocket on right side, pin the flap under upper facing and topstitch flap on the facing on wrong side. Stitch lining sacking to lower facing, stitch fabric sacking to upper facing. Adjust sackings to make their equal, then stitch.
4. Stitch middle back seam, stitch back shoulder darts. Stitch back relieve/shoulder seams. Stitch sleeve seams.
5. Sew sleeve hems into wrong side, then stitch into armholes. Sew pieces of warmer as

well as shoulder pads.

6. Lining: press free-fit pleat, stitch darts/relieve seams/sleeve seams leaving a segment into a seam unstitched to turn the garment right side out. Stitch front bands to lining front parts. Stitch shoulder seams. Stitch sleeves in.

7. Stitch inner collar into neckline up to the mark. Stitch outer collar to front bands and lining: slash front part/front bands allowances into corner up to the seam. Press seam allowances apart. Lay outer collar with front bands on the jacket right sides together. Stitch front edgings, lapels, and the collar up to the mark. Stitch front bands'/lining's lower edges to jacket hem. Turn the jacket right side out. Wrong side: stitch allowances of seam joining the collar between neckline together.

8. Stitch the lining of armholes upper segment to shoulder pads. Sew seams open segment into the lining. Fold lining sleeve hems under and sew.

9. Make one buttonhole into both front edgings. Sew buttons. When sewing the button on right edging, fold a flap button on wrong side.

Congratulations, your blazer is ready! :)