

If the pattern has a double line around it, the seam allowances are included.

**Note:** By default, seam allowances are NOT included (single line) and will need to be added when laying out and cutting details.

Seam Allowance: 1 cm on all seams; hem guidelines are printed on pattern.

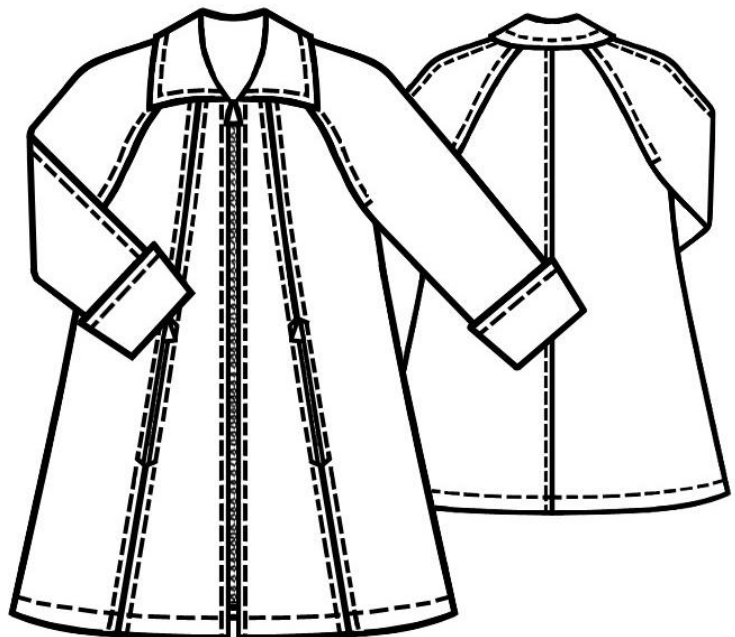
**Important!** Please print all the paper patterns and lay them out at the width of fabric you plan to use (usually from 90 to 150 cm) to see how much fabric you will need.

Don't forget to take into account pieces to be duplicated or cut on a fold. When sewing the garment, pay attention to notches. They must match up with corresponding pieces.

## 5076 Raglan sleeve swinger

Recommendations on fabric:  
fabric suitable for coats

You will also need: lining; fusible interfacing; raglan shoulder pads; 1 open-ended zipper (measure middle front line's length and select a zipper correspondingly); 2 zippers of 18 cm length.



### CUTTING:

The word, "beam" used on some patterns means "straight of grain". Some pieces will be cut on the fold, this is noted on the pattern piece. Mark all notches and other design features such as darts, pleats etc. from the pattern onto your fabric.

### Main fabric:

1. Back part – 2 pieces
2. Back neckline facing – 1 folded piece
3. Front band – 2 pieces
4. Collar – 2 pieces
5. Center front part – 2 pieces

6. Side front part – 2 pieces
7. Back sleeve – 2 pieces
8. Front sleeve – 2 pieces
9. Cuff – 4 pieces

Lining:

Cut off neckline facing from back part; add 1 cm for free fitting along back middle line. Join center front part and side front part in one piece, cut off front bands. Cut off facing and front bands from sleeves.

Sacking – 4 pieces

Fusible interfacing:

Apply the fusible interfacing to wrong side of front bands, back neckline facing, collar and cuffs. Apply the fusible interfacing additionally to back hem.

INSTRUCTIONS:

1. Stitch middle back seam. Press seam allowances apart.
2. Stitch front relieves leaving pocket entrances unstitches. Press seam allowances apart; press pocket entrance allowance along both sides of pocket entrance. Tack each zipper under pocket entrances so that teeth were invisible. Topstitch front parts along relieves/front edges of pocket entrances at 1 cm distance. Stitch one of lining sackings to allowance of pocket entrance's front edge; stitch another sacking to allowance of pocket entrance's back edge. Fold sackings frontward, cut, adjust, and stitch together.
3. Stitch front/back raglan seams, then topstitch at 1.0 cm distance.
4. Stitch upper sleeves together, topstitch at 1 cm distance. Stitch lower sleeves and side seams of the coat.
5. Sew shoulder pads.
6. Open zipper, fold zipper tapes upper corners under. Lay each tape outer side on front part's right side so that teeth were on front part and tapes were on edging's allowance. Stitch tapes to edging; begin stitching from neckline.
7. Stitch inner collar into neckline; stitch shoulder seams of back facing and front bands, stitch outer collar into facing neckline and front bands; press allowances apart, slash at rounding.

8. Lay outer collar joint with front bands on the garment (right sides together), then overstitch edgings and the collar as well as armholes; turn right side out and press; sew allowances of outer collar's edge on neckline allowance. On right side: turn edging, collar and armholes right side out and tack. At hem, lay front bands frontward. Fold hem allowance into wrong side and sew. Fold front bands into wrong side. Topstitch front bands and the collar t 1.0 cm distance.

10. Lay cuffs in pairs right sides together and stitch along upper edges. Lay each cuff flat and stitch short edges. Fold the cuff along the center, topstitch along folding at 1 cm distance. Stitch one of cuff's details to sleeve hem (right sides together), press seam allowances apart. Press open edges into wrong side.

11. Stitch lining details together. Stitch the lining to cuff edges, front bands inner edges and back neckline facing. Hem the bottom of the lining.

Congratulations, your coat is ready! :)