

If the pattern has a double line around it, the seam allowances are included.

**Note:** By default, seam allowances are NOT included (single line) and will need to be added when laying out and cutting details.

Seam Allowance: 1 cm on all seams; hem guidelines are printed on pattern.

**Important!** Please print all the paper patterns and lay them out at the width of fabric you plan to use (usually from 90 to 150 cm) to see how much fabric you will need.

Don't forget to take into account pieces to be duplicated or cut on a fold. When sewing the garment, pay attention to notches. They must match up with corresponding pieces.

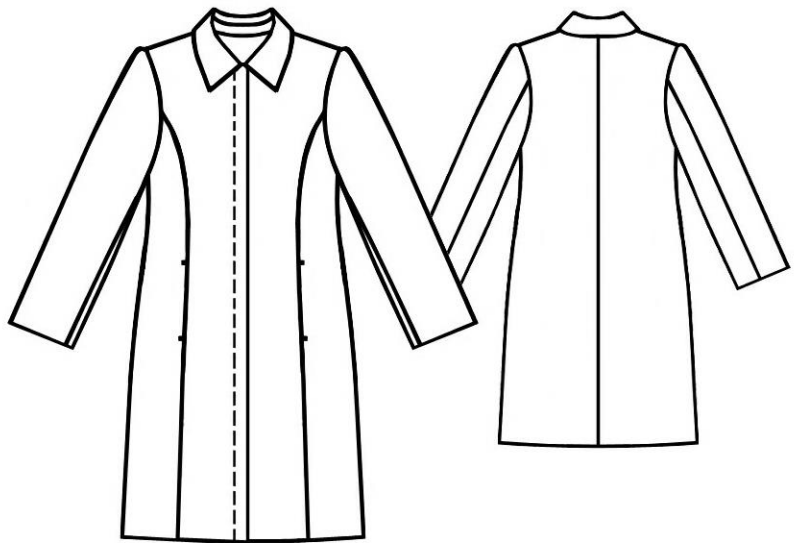
## 5106 Coat with hidden closure and curved seams

Recommendations on fabric: velour, fabric suitable for coats.

You will also need: lining; fusible interfacing; 4 buttons; shoulder pads.

### CUTTING:

The word, "beam" used on some patterns means "straight of grain". Some pieces will be cut on the fold, this is noted on the pattern piece. Mark all notches and other design features such as darts, pleats etc. from the pattern onto your fabric.



### Main fabric:

1. Middle part of front part - 2 details
2. Side front part - 2 details
3. Back part - 2 details
4. Upper sleeve - 2 details
5. Lower sleeve- 2 details
6. Facing/buttonstand - 2 details
7. Back neckline facing - 1 folded detail

8. Collar - 2 folded details
9. Pocket bag - 2 details

Lining:

1. Middle front part - except for the width facings/buttonstands
2. Back part - except for the width of neckline facings
3. Side front part, upper, elbow parts of sleeve – as is
4. Pocket bag - 2 details

Fusible interfacing:

1. Facing/buttonstand - 2 details
2. Back neckline facing - 1 folded detail
3. Collar - 2 folded details

INSTRUCTIONS:

1. Apply fusing to facings/buttonstands, back neckline facing, collar
2. Sew front relieve seams. Leave entrance into pocket in relieve seams of each front part. Press seam allowances apart. From the wrong side of front part put both of pocket bags onto entrance to pocket, right sides together, pin and sew along the marked lines of relieve seam: pocket bag from main fabric - to seam allowance along entrance to pocket of side front part, pocket bag from lining - to seam allowance along entrance to pocket of side front part (this pocket bag is sewn along the line of center of seam allowance of entrance into pocket). Press pocket bags forward, slash, level, and sew.
3. Sew middle seam of back part, side, and shoulder seams.
4. Sew facing/buttonstand of right front part to lower edge (not reaching the end of facing/buttonstand by 5 cm) and to edge of facing/buttonstand of right front part up to corner (cross marker). Tack facing/buttonstand to front part along the fold line up to edge of neckline. Put right front part and facing/buttonstand of front right part apart, as well as narrow wholecut facings, and press apart. Make buttonholes for invisible closure. Put narrow facing of front part on panel with buttonholes and sew lower edges. Tack facing and panel to facing/buttonstand. Delete tacking along edge of facing/buttonstand.
5. Sew facing/buttonstand of left front part to lower edge (not reaching the end of facing/buttonstand by 5 cm) and to edge facing/buttonstand of left front part up to edge neckline. Cut wholecut narrow facings to width of seam allowances.
6. Sew neckline of back part stitch to facings/buttonstands.

7. Overstitch collar along the outer contour and, taking together open edges, tack into the neckline from edge of facing/buttonstand to edge of facing/buttonstand.
8. Sew facings/buttonstands and back neckline facing to edge neckline on top of collar. Cut seam allowances seam close to seam. Turn facings/buttonstands and the facing onto wrong side. Press seam allowance on hem of garment press onto wrong side, but don't sew it yet. Press edges of facing/buttonstands. Sew panel with buttonholes to edge of facing/buttonstand of right front part between the buttonholes with a couple of stitches by hand.
9. Sew sleeve seams. Press seam allowances on sleeve hem onto wrong side, but don't sew yet.
10. Sew in sleeves, easing in along caps. Sew a band of polyester batting under the seam allowances of armhole seam along the cap part. Sew shoulder pads.
11. Sew details from lining. Sew lining stitch to lower edges of sleeves, inner edges of facing/buttonstands and neckline facing of back part. Sew hem of lining.

Congratulations, your coat is ready! :)